

Casein Kinase II α (phospho Tyr255) Polyclonal Antibody

Catalog_no :	AP0391
Applications :	WB,IHC-p,ELISA
Reactivity :	Human,Mouse,Rat
Category :	抗原抗体
Size :	100 μ g/50 μ g/20 μ g
Gene_name :	CSNK2A1
Protein_name :	Casein kinase II subunit alpha
Humangene_id :	1457
Humanswissprot_no :	P68400
Mousegene_id :	12995
Mouseswissprot_no :	Q60737
Ratgene_id :	116549
Ratswissprot_no :	P19139
Immunogen :	The antiserum was produced against synthesized peptide derived from human Casein Kinase II alpha around the phosphorylation site of Tyr255. AA range:221-270
Specificity :	Phospho-Casein Kinase II α (Y255) Polyclonal Antibody detects endogenous levels of Casein Kinase II α protein only when phosphorylated at Y255.
Formulation :	Liquid in PBS containing 50% glycerol, 0.5% BSA and 0.02% sodium azide.
Source :	Rabbit
Dilution :	Western Blot: 1/500 - 1/2000. Immunohistochemistry: 1/100 - 1/300. ELISA: 1/10000. Not yet tested in other applications.
Purification :	The antibody was affinity-purified from rabbit antiserum by affinity-chromatography using epitope-specific immunogen.
Concentration :	1 mg/ml
Storage_stability :	-20°C/1 year

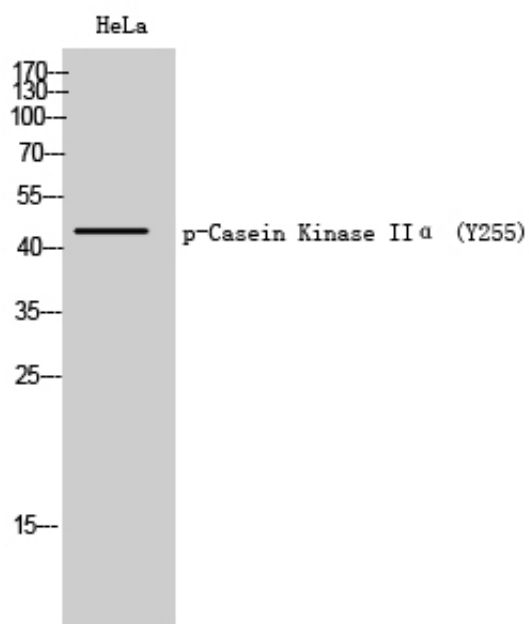


Msd : MSDS_Antibody.pdf

Other_name : CSNK2A1; CK2A1; Casein kinase II subunit alpha; CK II alpha

Molecular Weight : 45KD

Product Images



Western Blot analysis of HeLa cells using Phospho-Casein Kinase II α (Y255) Polyclonal Antibody cells nucleus extracted by Minute TM Cytoplasmic and Nuclear Fractionation kit (SC-003, Inventbiotech, MN, USA).