

Casein Kinase I α (phospho Tyr321) Polyclonal Antibody

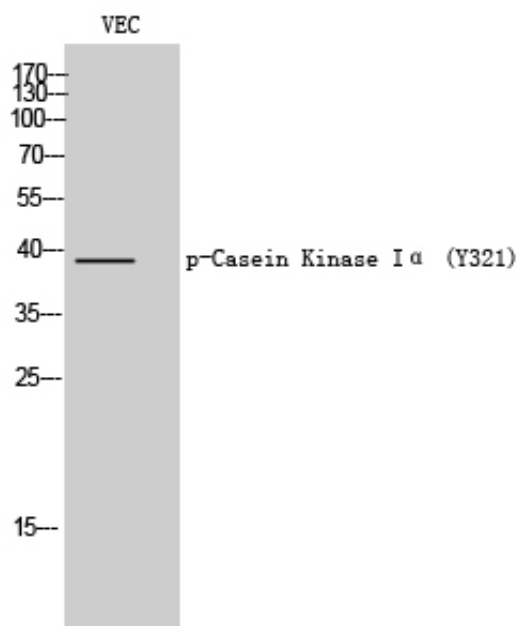
Catalog_no :	<u>AP0392</u>
Applications :	<u>WB,IHC-p,ELISA</u>
Reactivity :	<u>Human,Mouse,Rat</u>
Category :	<u>抗原抗体</u>
Size :	<u>100μg/50μg/20μg</u>
Gene_name :	<u>CSNK1A1</u>
Protein_name :	<u>Casein kinase I isoform alpha</u>
Humangene_id	<u>1452</u>
:	<u></u>
Humanswissprot	<u>P48729</u>
_no :	<u></u>
Mouseswissprot	<u>Q8BK63</u>
_no :	<u></u>
Ratgene_id :	<u>113927</u>
Ratswissprot_no	<u>P97633</u>
:	<u></u>
Immunogen :	<u>The antiserum was produced against synthesized peptide derived from human Casein Kinase I alpha around the phosphorylation site of Tyr321. AA range:287-336</u>
Specificity :	<u>Phospho-Casein Kinase Iα (Y321) Polyclonal Antibody detects endogenous levels of Casein Kinase Iα protein only when phosphorylated at Y321.</u>
Formulation :	<u>Liquid in PBS containing 50% glycerol, 0.5% BSA and 0.02% sodium azide.</u>
Source :	<u>Rabbit</u>
Dilution :	<u>Western Blot: 1/500 - 1/2000. Immunohistochemistry: 1/100 - 1/300. ELISA: 1/5000. Not yet tested in other applications.</u>
Purification :	<u>The antibody was affinity-purified from rabbit antiserum by affinity-chromatography using epitope-specific immunogen.</u>
Concentration :	<u>1 mg/ml</u>
Storage_stability	<u>-20$^{\circ}$C/1 year</u>
:	<u></u>
Msds :	<u>MSDS_Antibody.pdf</u>



Other_name : CSNK1A1; Casein kinase I isoform alpha; CKI-alpha; CK1

Molecular Weight : 35KD

Product Images



Western Blot analysis of VEC cells using Phospho-Casein Kinase Iα (Y321) Polyclonal Antibody