

## MRE11 (phospho Ser264) Polyclonal Antibody

Catalog_no :	AP0394
Applications :	WB,ELISA
Reactivity :	Human,Mouse,Rat
Category :	抗原抗体
Size :	100µg/50µg/20µg
Gene_name :	MRE11A
Protein_name :	Double-strand break repair protein MRE11A
Humangene_id :	<a href="#">4361</a>
Humanswissprot_no :	<a href="#">P49959</a>
Mousegene_id :	<a href="#">17535</a>
Mouseswissprot_no :	<a href="#">Q61216</a>
Ratgene_id :	<a href="#">64046</a>
Ratswissprot_no :	<a href="#">Q9JIM0</a>
Immunogen :	The antiserum was produced against synthesized peptide derived from human MRE11 around the phosphorylation site of Ser264. AA range:230-279
Specificity :	Phospho-MRE11 (S264) Polyclonal Antibody detects endogenous levels of MRE11 protein only when phosphorylated at S264.
Formulation :	Liquid in PBS containing 50% glycerol, 0.5% BSA and 0.02% sodium azide.
Source :	Rabbit
Dilution :	Western Blot: 1/500 - 1/2000. ELISA: 1/5000. Not yet tested in other applications.
Purification :	The antibody was affinity-purified from rabbit antiserum by affinity-chromatography using epitope-specific immunogen.
Concentration :	1 mg/ml
Storage_stability :	-20°C/1 year
Msds :	MSDS_Antibody.pdf



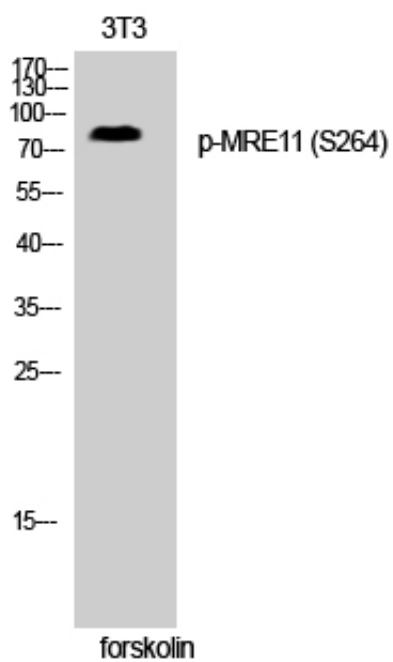
Other\_name : MRE11A; HNGS1; MRE11; Double-strand break repair protein MRE11A; Meiotic recombination 11 homolog 1; MRE11 homolog 1; Meiotic recombination 11 homolog A; MRE11 homolog A

---

Molecular Weight : 80KD

---

## Product Images



Western Blot analysis of 3T3 cells using Phospho-MRE11 (S264) Polyclonal Antibody cells nucleus extracted by Minute TM Cytoplasmic and Nuclear Fractionation kit (SC-003, Inventbiotech, MN, USA).