

Myf-5 (phospho Ser49) Polyclonal Antibody

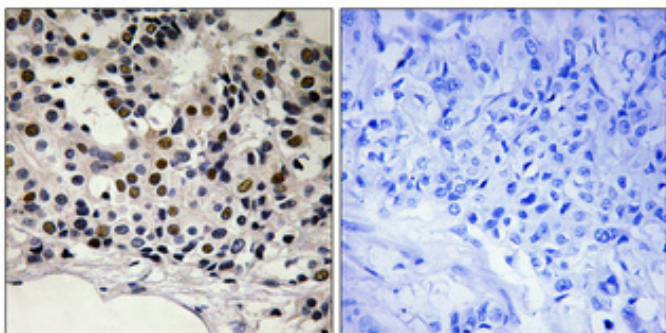
Catalog_no :	AP0395
Applications :	WB,IHC-p,ELISA
Reactivity :	Human,Mouse
Category :	抗原抗体
Size :	100µg/50µg/20µg
Gene_name :	MYF5
Protein_name :	Myogenic factor 5
Humangene_id :	4617
Humanswissprot_no :	P13349
Mousegene_id :	17877
Mouseswissprot_no :	P24699
Immunogen :	The antiserum was produced against synthesized peptide derived from human Myogenic Factor 5 around the phosphorylation site of Ser49. AA range:21-70
Specificity :	Phospho-Myf-5 (S49) Polyclonal Antibody detects endogenous levels of Myf-5 protein only when phosphorylated at S49.
Formulation :	Liquid in PBS containing 50% glycerol, 0.5% BSA and 0.02% sodium azide.
Source :	Rabbit
Dilution :	Western Blot: 1/500 - 1/2000. Immunohistochemistry: 1/100 - 1/300. ELISA: 1/10000. Not yet tested in other applications.
Purification :	The antibody was affinity-purified from rabbit antiserum by affinity-chromatography using epitope-specific immunogen.
Concentration :	1 mg/ml
Storage_stability :	-20°C/1 year
Msds :	MSDS_Antibody.pdf
Other_name :	MYF5; BHLHC2; Myogenic factor 5; Myf-5; Class C basic helix-loop-helix protein 2; bHLHc2



Molecular
Weight :

38KD

Product Images



Immunohistochemical analysis of paraffin-embedded Human breast cancer. Antibody was diluted at 1:100(4°,overnight). High-pressure and temperature Tris-EDTA,pH8.0 was used for antigen retrieval. Negative contrl (right) obtaned from antibody was pre-absorbed by immunogen peptide.