

Lfc (phospho Ser885) Polyclonal Antibody

Catalog_no :	AP0398
Applications :	WB,IHC-p,ELISA
Reactivity :	Human,Mouse,Rat
Category :	抗原抗体
Size :	100µg/50µg/20µg
Gene_name :	ARHGEF2
Protein_name :	Rho guanine nucleotide exchange factor 2
Humangene_id	9181
:	
Humanswissprot	Q92974
_no :	
Mousegene_id :	16800
Mouseswissprot	Q60875
_no :	
Ratgene_id :	310635
Ratswissprot_no	Q5FVC2
:	
Immunogen :	The antiserum was produced against synthesized peptide derived from human Rho/Rac Guanine Nucleotide Exchange Factor 2 around the phosphorylation site of Ser885. AA range:851-900
Specificity :	Phospho-Lfc (S885) Polyclonal Antibody detects endogenous levels of Lfc protein only when phosphorylated at S885.
Formulation :	Liquid in PBS containing 50% glycerol, 0.5% BSA and 0.02% sodium azide.
Source :	Rabbit
Dilution :	Western Blot: 1/500 - 1/2000. Immunohistochemistry: 1/100 - 1/300. ELISA: 1/5000. Not yet tested in other applications.
Purification :	The antibody was affinity-purified from rabbit antiserum by affinity-chromatography using epitope-specific immunogen.
Concentration :	1 mg/ml
Storage_stability	-20°C/1 year
:	

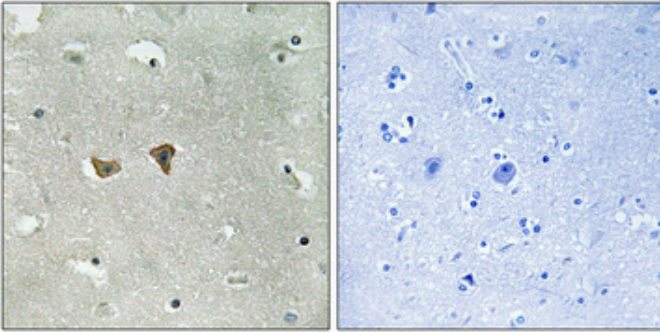


Msd : [MSDS_Antibody.pdf](#)

Other_name : ARHGEF2; KIAA0651; LFP40; Rho guanine nucleotide exchange factor 2; Guanine nucleotide exchange factor H1; GEF-H1; Microtubule-regulated Rho-GEF; Proliferating cell nucleolar antigen p40

Molecular Weight : 111KD

Product Images



Immunohistochemical analysis of paraffin-embedded Human brain. Antibody was diluted at 1:100(4°,overnight). High-pressure and temperature Tris-EDTA,pH8.0 was used for antigen retrieval. Negative contrl (right) obtaned from antibody was pre-absorbed by immunogen peptide.