

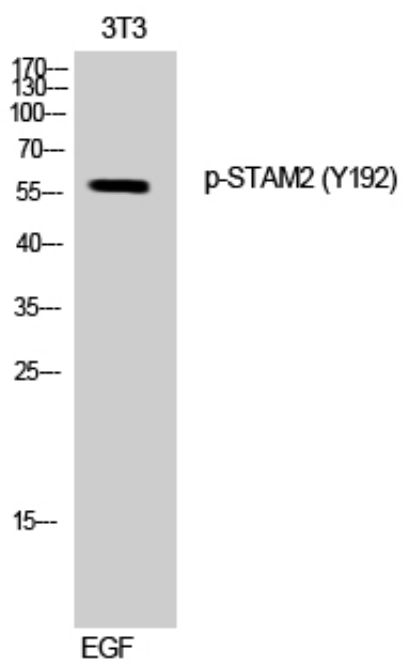
STAM2 (phospho Tyr192) Polyclonal Antibody

Catalog_no :	AP0399
Applications :	WB,IHC-p,ELISA
Reactivity :	Human,Mouse
Category :	抗原抗体
Size :	100µg/50µg/20µg
Gene_name :	STAM2
Protein_name :	Signal transducing adapter molecule 2
Humangene_id :	8986
Humanswissprot_no :	O75886
Mousegene_id :	56324
Mouseswissprot_no :	O88811
Immunogen :	The antiserum was produced against synthesized peptide derived from human STAM2 around the phosphorylation site of Tyr192. AA range:161-210
Specificity :	Phospho-STAM2 (Y192) Polyclonal Antibody detects endogenous levels of STAM2 protein only when phosphorylated at Y192.
Formulation :	Liquid in PBS containing 50% glycerol, 0.5% BSA and 0.02% sodium azide.
Source :	Rabbit
Dilution :	Western Blot: 1/500 - 1/2000. Immunohistochemistry: 1/100 - 1/300. ELISA: 1/10000. Not yet tested in other applications.
Purification :	The antibody was affinity-purified from rabbit antiserum by affinity-chromatography using epitope-specific immunogen.
Concentration :	1 mg/ml
Storage_stability :	-20°C/1 year
Msds :	MSDS_Antibody.pdf
Other_name :	STAM2; HBP; Signal transducing adapter molecule 2; STAM-2; Hrs-binding protein
Molecular	58KD



Weight :

Product Images



Western Blot analysis of 3T3 cells using Phospho-STAM2 (Y192) Polyclonal Antibody