

TRF1 (phospho Ser219) Polyclonal Antibody

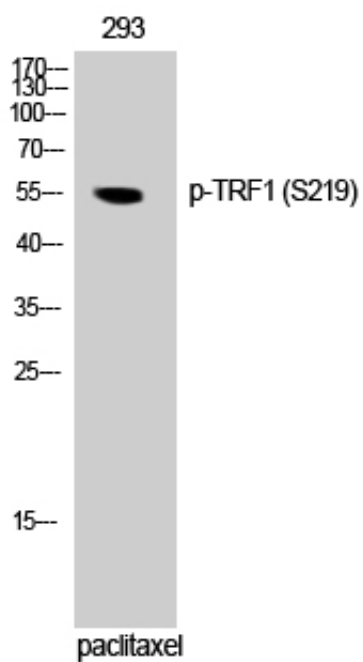
Catalog_no :	AP0400
Applications :	WB,ELISA
Reactivity :	Human,Mouse
Category :	抗原抗体
Size :	100µg/50µg/20µg
Gene_name :	TERF1
Protein_name :	Telomeric repeat-binding factor 1
Humangene_id :	7013
Humanswissprot_no :	P54274
Mousegene_id :	21749
Mouseswissprot_no :	P70371
Immunogen :	The antiserum was produced against synthesized peptide derived from human Telomeric Repeat Binding Factor 1 around the phosphorylation site of Ser219. AA range:185-234
Specificity :	Phospho-TRF1 (S219) Polyclonal Antibody detects endogenous levels of TRF1 protein only when phosphorylated at S219.
Formulation :	Liquid in PBS containing 50% glycerol, 0.5% BSA and 0.02% sodium azide.
Source :	Rabbit
Dilution :	Western Blot: 1/500 - 1/2000. ELISA: 1/5000. Not yet tested in other applications.
Purification :	The antibody was affinity-purified from rabbit antiserum by affinity-chromatography using epitope-specific immunogen.
Concentration :	1 mg/ml
Storage_stability :	-20°C/1 year
Msds :	MSDS_Antibody.pdf
Other_name :	TERF1; PIN2; TRBF1; TRF; TRF1; Telomeric repeat-binding factor 1; NIMA-interacting protein 2; TTAGGG repeat-binding factor 1; Telomeric protein Pin2/TRF1



Molecular
Weight :

55KD

Product Images



Western Blot analysis of 293 cells using Phospho-TRF1 (S219) Polyclonal Antibody cells nucleus extracted by Minute TM Cytoplasmic and Nuclear Fractionation kit (SC-003, Inventbiotech, MN, USA).