

Ezrin (phospho Tyr146) Polyclonal Antibody

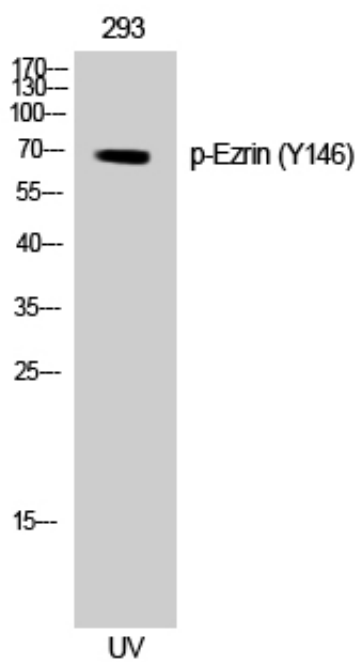
Catalog_no :	AP0409
Applications :	WB,ELISA
Reactivity :	Human,Mouse,Rat
Category :	抗原抗体
Size :	100µg/50µg/20µg
Gene_name :	EZR
Protein_name :	Ezrin
Humangene_id :	7430
Humanswissprot_no :	P15311
Mousegene_id :	22350
Mouseswissprot_no :	P26040
Ratgene_id :	54319
Ratswissprot_no :	P31977
Immunogen :	The antiserum was produced against synthesized peptide derived from human Ezrin around the phosphorylation site of Tyr146. AA range:111-160
Specificity :	Phospho-Ezrin (Y146) Polyclonal Antibody detects endogenous levels of Ezrin protein only when phosphorylated at Y146.
Formulation :	Liquid in PBS containing 50% glycerol, 0.5% BSA and 0.02% sodium azide.
Source :	Rabbit
Dilution :	Western Blot: 1/500 - 1/2000. ELISA: 1/40000. Not yet tested in other applications.
Purification :	The antibody was affinity-purified from rabbit antiserum by affinity-chromatography using epitope-specific immunogen.
Concentration :	1 mg/ml
Storage_stability :	-20°C/1 year
Msds :	MSDS_Antibody.pdf



Other_name : EZR; VIL2; Ezrin; Cytovillin; Villin-2; p81

Molecular Weight : 69KD

Product Images



Western Blot analysis of 293 cells using Phospho-Ezrin (Y146) Polyclonal Antibody