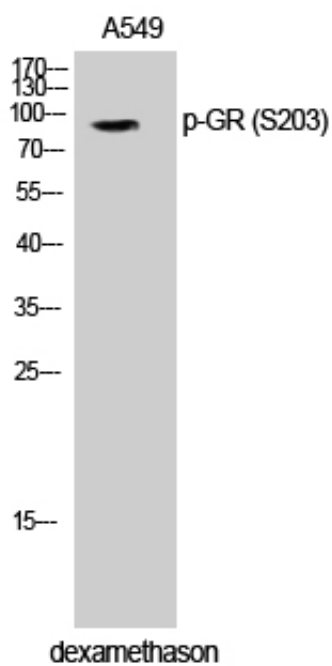




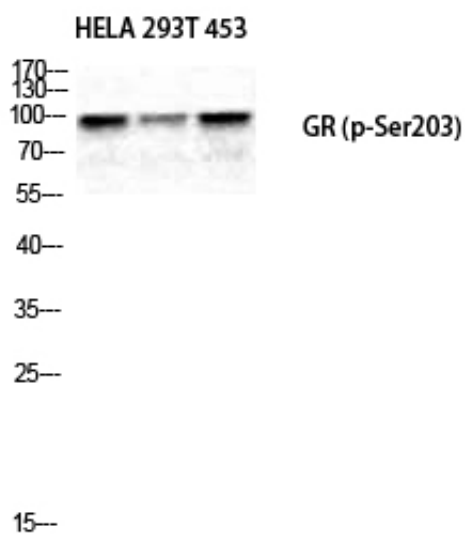
## GR (phospho Ser203) Polyclonal Antibody

Catalog_no :	AP0412
Applications :	WB,ELISA
Reactivity :	Human,Mouse
Category :	抗原抗体
Size :	100µg/50µg/20µg
Gene_name :	NR3C1
Protein_name :	Glucocorticoid receptor
Humangene_id :	<a href="#">2908</a>
Humanswissprot_no :	<a href="#">P04150</a>
Mouseswissprot_no :	<a href="#">P06537</a>
Immunogen :	The antiserum was produced against synthesized peptide derived from human GR around the phosphorylation site of Ser203. AA range:171-220
Specificity :	Phospho-GR (S203) Polyclonal Antibody detects endogenous levels of GR protein only when phosphorylated at S203.
Formulation :	Liquid in PBS containing 50% glycerol, 0.5% BSA and 0.02% sodium azide.
Source :	Rabbit
Dilution :	Western Blot: 1/500 - 1/2000. ELISA: 1/10000. Not yet tested in other applications.
Purification :	The antibody was affinity-purified from rabbit antiserum by affinity-chromatography using epitope-specific immunogen.
Concentration :	1 mg/ml
Storage_stability :	-20°C/1 year
Msds :	<a href="#">MSDS_Antibody.pdf</a>
Other_name :	NR3C1; GRL; Glucocorticoid receptor; GR; Nuclear receptor subfamily 3 group C member 1
Molecular Weight :	86KD

## Product Images



Western Blot analysis of A549 cells using Phospho-GR (S203) Polyclonal Antibody diluted at 1 : 500



Western Blot analysis of HELA 293T 453 cells using Phospho-GR (S203) Polyclonal Antibody diluted at 1 : 500