

Flt-3 (phospho Tyr842) Polyclonal Antibody

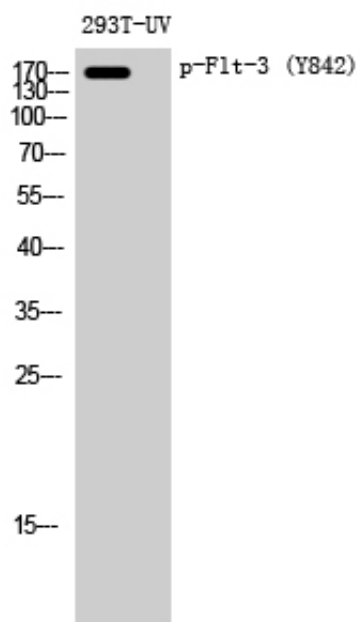
Catalog_no :	AP0420
Applications :	WB,ELISA
Reactivity :	Human,Mouse
Category :	抗原抗体
Size :	100µg/50µg/20µg
Gene_name :	FLT3
Protein_name :	Receptor-type tyrosine-protein kinase FLT3
Humangene_id :	2322
Humanswissprot_no :	P36888
Mousegene_id :	14255
Mouseswissprot_no :	Q00342
Immunogen :	The antiserum was produced against synthesized peptide derived from human FLT3 around the phosphorylation site of Tyr842. AA range:808-857
Specificity :	Phospho-Flt-3 (Y842) Polyclonal Antibody detects endogenous levels of Flt-3 protein only when phosphorylated at Y842.
Formulation :	Liquid in PBS containing 50% glycerol, 0.5% BSA and 0.02% sodium azide.
Source :	Rabbit
Dilution :	Western Blot: 1/500 - 1/2000. ELISA: 1/10000. Not yet tested in other applications.
Purification :	The antibody was affinity-purified from rabbit antiserum by affinity-chromatography using epitope-specific immunogen.
Concentration :	1 mg/ml
Storage_stability :	-20°C/1 year
Msds :	MSDS_Antibody.pdf
Other_name :	FLT3; CD135; FLK2; STK1; Receptor-type tyrosine-protein kinase FLT3; FL cytokine receptor; Fetal liver kinase-2; FLK-2; Fms-like tyrosine kinase 3; FLT-3; Stem cell tyrosine kinase 1; STK-1; CD antigen CD135



Molecular
Weight :

170KD

Product Images



Western Blot analysis of 293T-UV cells using Phospho-Flt-3 (Y842) Polyclonal Antibody diluted at 1 : 1000