

Intestinal Cell Kinase (phospho Tyr159) Polyclonal Antibody

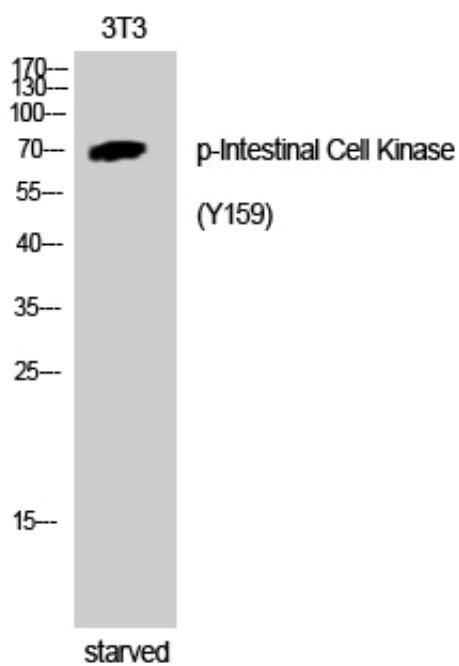
Catalog_no :	AP0421
Applications :	WB,ELISA
Reactivity :	Human,Mouse,Rat
Category :	抗原抗体
Size :	100µg/50µg/20µg
Gene_name :	ICK
Protein_name :	Serine/threonine-protein kinase ICK
Humangene_id :	22858
Humanswissprot_no :	Q9UPZ9
Mousegene_id :	56542
Mouseswissprot_no :	Q9JKV2
Ratgene_id :	84411
Ratswissprot_no :	Q62726
Immunogen :	The antiserum was produced against synthesized peptide derived from human ICK around the phosphorylation site of Tyr159. AA range:125-174
Specificity :	Phospho-Intestinal Cell Kinase (Y159) Polyclonal Antibody detects endogenous levels of Intestinal Cell Kinase protein only when phosphorylated at Y159.
Formulation :	Liquid in PBS containing 50% glycerol, 0.5% BSA and 0.02% sodium azide.
Source :	Rabbit
Dilution :	Western Blot: 1/500 - 1/2000. ELISA: 1/10000. Not yet tested in other applications.
Purification :	The antibody was affinity-purified from rabbit antiserum by affinity-chromatography using epitope-specific immunogen.
Concentration :	1 mg/ml
Storage_stability :	-20°C/1 year
Msds :	MSDS_Antibody.pdf



Other_name : ICK; KIAA0936; Serine/threonine-protein kinase ICK; Intestinal cell kinase; hICK;
Laryngeal cancer kinase 2; LCK2; MAK-related kinase; MRK

Molecular Weight : 71KD

Product Images



Western Blot analysis of 3T3 cells using Phospho-Intestinal Cell Kinase (Y159) Polyclonal Antibody