

## MEK-1 (phospho Thr386) Polyclonal Antibody

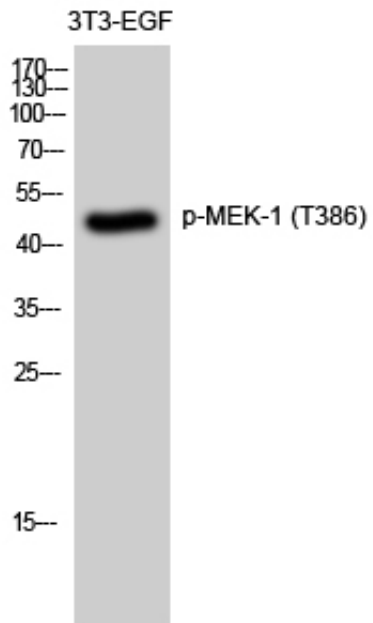
Catalog_no :	AP0425
Applications :	WB,ELISA
Reactivity :	Human,Mouse,Rat
Category :	抗原抗体
Size :	100µg/50µg/20µg
Gene_name :	MAP2K1
Protein_name :	Dual specificity mitogen-activated protein kinase kinase 1
Humangene_id	<a href="#">5604</a>
:	
Humanswissprot	<a href="#">Q02750</a>
_no :	
Mousegene_id :	<a href="#">26395</a>
Mouseswissprot	<a href="#">P31938</a>
_no :	
Ratgene_id :	<a href="#">170851</a>
Ratswissprot_no	<a href="#">Q01986</a>
:	
Immunogen :	The antiserum was produced against synthesized peptide derived from human MAP2K1 around the phosphorylation site of Thr386. AA range:344-393
Specificity :	Phospho-MEK-1 (T386) Polyclonal Antibody detects endogenous levels of MEK-1 protein only when phosphorylated at T386.
Formulation :	Liquid in PBS containing 50% glycerol, 0.5% BSA and 0.02% sodium azide.
Source :	Rabbit
Dilution :	Western Blot: 1/500 - 1/2000. ELISA: 1/10000. Not yet tested in other applications.
Purification :	The antibody was affinity-purified from rabbit antiserum by affinity-chromatography using epitope-specific immunogen.
Concentration :	1 mg/ml
Storage_stability	-20°C/1 year
:	
Msds :	MSDS_Antibody.pdf



Other\_name : MAP2K1; MEK1; PRKMK1; Dual specificity mitogen-activated protein kinase kinase 1; MAP kinase kinase 1; MAPKK 1; MKK1; ERK activator kinase 1; MAPK/ERK kinase 1; MEK 1

Molecular Weight : 45KD

## Product Images



Western Blot analysis of 3T3-EGF cells using Phospho-MEK-1 (T386) Polyclonal Antibody diluted at 1 : 2000