

Raf-1 (phospho Ser301) Polyclonal Antibody

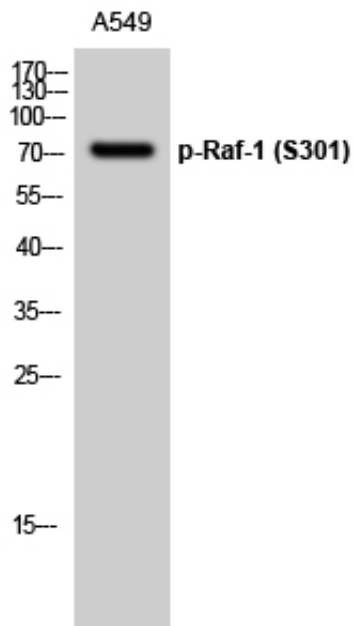
Catalog_no :	AP0435
Applications :	WB,ELISA
Reactivity :	Human,Mouse,Rat
Category :	抗原抗体
Size :	100µg/50µg/20µg
Gene_name :	RAF1
Protein_name :	RAF proto-oncogene serine/threonine-protein kinase
Humangene_id :	5894
Humanswissprot_no :	P04049
Mousegene_id :	110157
Mouseswissprot_no :	Q99N57
Ratgene_id :	24703
Ratswissprot_no :	P11345
Immunogen :	Synthesized phospho-peptide around the phosphorylation site of human Raf-1 (phospho Ser301)
Specificity :	Phospho-Raf-1 (S301) Polyclonal Antibody detects endogenous levels of Raf-1 protein only when phosphorylated at S301.
Formulation :	Liquid in PBS containing 50% glycerol, 0.5% BSA and 0.02% sodium azide.
Source :	Rabbit
Dilution :	Western Blot: 1/500 - 1/2000. ELISA: 1/10000. Not yet tested in other applications.
Purification :	The antibody was affinity-purified from rabbit antiserum by affinity-chromatography using epitope-specific immunogen.
Concentration :	1 mg/ml
Storage_stability :	-20°C/1 year
Msds :	MSDS_Antibody.pdf



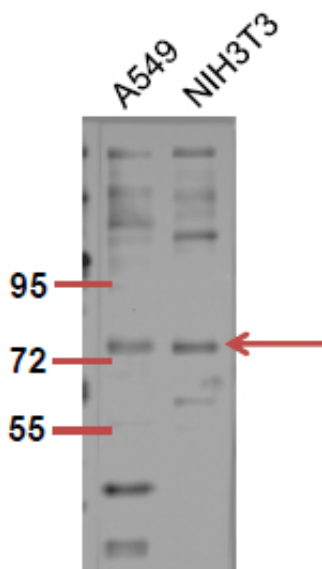
Other_name : RAF1; RAF; RAF proto-oncogene serine/threonine-protein kinase; Proto-oncogene c-RAF; cRaf; Raf-1

Molecular Weight : 75KD

Product Images



Western Blot analysis of A549 cells using Phospho-Raf-1 (S301) Polyclonal Antibody diluted at 1 : 1000



The picture was kindly provided by our customer, antibody was diluted at 1:500