

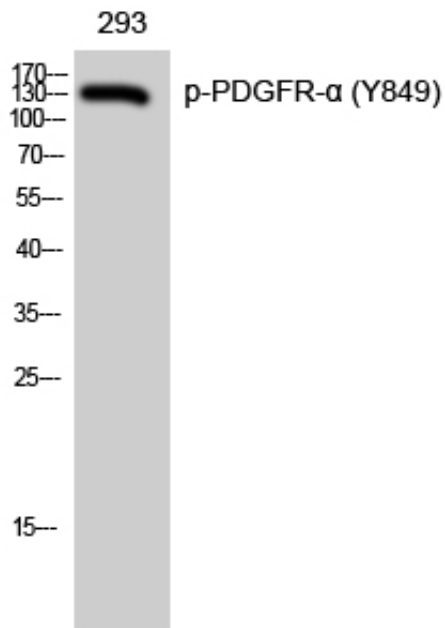
PDGFR- α (phospho Tyr849) Polyclonal Antibody

Catalog_no :	AP0441
Applications :	WB,IHC-p,ELISA
Reactivity :	Human,Mouse,Rat
Category :	抗原抗体
Size :	100 μ g/50 μ g/20 μ g
Gene_name :	PDGFRA
Protein_name :	Platelet-derived growth factor receptor alpha
Humangene_id :	5156
Humanswissprot_no :	P16234
Mousegene_id :	18595
Mouseswissprot_no :	P26618
Ratgene_id :	25267
Ratswissprot_no :	P20786
Immunogen :	The antiserum was produced against synthesized peptide derived from human PDGFRA around the phosphorylation site of Tyr849. AA range:816-865
Specificity :	Phospho-PDGFR- α (Y849) Polyclonal Antibody detects endogenous levels of PDGFR- α protein only when phosphorylated at Y849.
Formulation :	Liquid in PBS containing 50% glycerol, 0.5% BSA and 0.02% sodium azide.
Source :	Rabbit
Dilution :	Western Blot: 1/500 - 1/2000. Immunohistochemistry: 1/100 - 1/300. ELISA: 1/5000. Not yet tested in other applications.
Purification :	The antibody was affinity-purified from rabbit antiserum by affinity-chromatography using epitope-specific immunogen.
Concentration :	1 mg/ml
Storage_stability :	-20°C/1 year



MsdS :	MSDS_Antibody.pdf
Other_name :	PDGFRA; PDGFR2; RHEPDGFRA; Platelet-derived growth factor receptor alpha; PDGF-R-alpha; PDGFR-alpha; Alpha platelet-derived growth factor receptor; Alpha-type platelet-derived growth factor receptor; CD140 antigen-like family member A; CD14
Molecular Weight :	140KD

Product Images



Western Blot analysis of 293 cells using Phospho-PDGFR- α (Y849) Polyclonal Antibody