



Flg/Bek (phospho Tyr463/466) Polyclonal Antibody

Catalog_no :	AP0452
Applications :	WB,ELISA
Reactivity :	Human,Mouse,Rat
Category :	抗原抗体
Size :	100µg/50µg/20µg
Gene_name :	FGFR1/FGFR2
Protein_name :	Basic fibroblast growth factor receptor 1/2
Humangene_id :	2260/2263
Humanswissprot_no :	P11362/P21802
Mousegene_id :	14182/14183
Ratgene_id :	79114
Ratswissprot_no :	Q04589
Immunogen :	Synthesized phospho-peptide around the phosphorylation site of human Flg/Bek (phospho Tyr463/466)
Specificity :	Phospho-Flg/Bek (Y463/466) Polyclonal Antibody detects endogenous levels of Flg/Bek protein only when phosphorylated at Y463/466.
Formulation :	Liquid in PBS containing 50% glycerol, 0.5% BSA and 0.02% sodium azide.
Source :	Rabbit
Dilution :	Western Blot: 1/500 - 1/2000. ELISA: 1/10000. Not yet tested in other applications.
Purification :	The antibody was affinity-purified from rabbit antiserum by affinity-chromatography using epitope-specific immunogen.
Concentration :	1 mg/ml
Storage_stability :	-20°C/1 year
Msds :	MSDS_Antibody.pdf
Other_name :	FGFR1; BFGFR; CEK; FGFBR; FLG; FLT2; HBGFR; Fibroblast growth factor receptor 1; FGFR-1; Basic fibroblast growth factor receptor 1; BFGFR; bFGF-R-1; Fms-like tyrosine

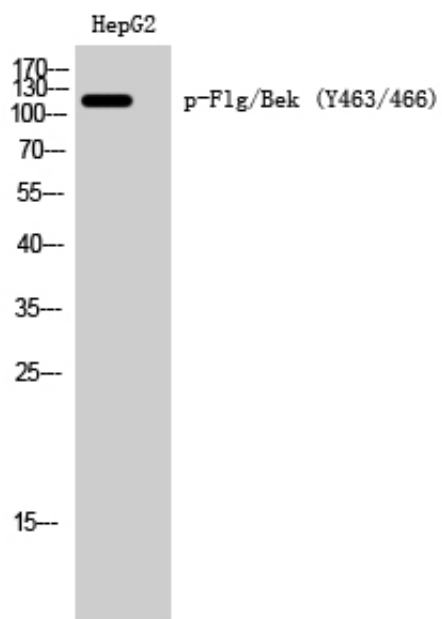


kinase 2; FLT-2; N-sam; Proto-oncogene c-Fgr; CD antigen CD331; FGFR2; BE

Molecular
Weight :

120KD

Product Images



Western Blot analysis of HepG2 cells using Phospho-Flg/Bek (Y463/466) Polyclonal Antibody