

GRK 2 (phospho Ser685) Polyclonal Antibody

Catalog_no :	AP0456
Applications :	WB,ELISA
Reactivity :	Human,Mouse,Rat
Category :	抗原抗体
Size :	100µg/50µg/20µg
Gene_name :	ADRBK1
Protein_name :	Beta-adrenergic receptor kinase 1
Humangene_id	156
:	
Humanswissprot	P25098
_no :	
Mouseswissprot	Q99MK8
_no :	
Ratgene_id :	25238
Ratswissprot_no	P26817
:	
Immunogen :	The antiserum was produced against synthesized peptide derived from human GRK2 around the phosphorylation site of Ser685. AA range:640-689
Specificity :	Phospho-GRK 2 (S685) Polyclonal Antibody detects endogenous levels of GRK 2 protein only when phosphorylated at S685.
Formulation :	Liquid in PBS containing 50% glycerol, 0.5% BSA and 0.02% sodium azide.
Source :	Rabbit
Dilution :	Western Blot: 1/500 - 1/2000. ELISA: 1/5000. Not yet tested in other applications.
Purification :	The antibody was affinity-purified from rabbit antiserum by affinity-chromatography using epitope-specific immunogen.
Concentration :	1 mg/ml
Storage_stability	-20°C/1 year
:	
Msds :	MSDS_Antibody.pdf
Other_name :	ADRBK1; BARK; BARK1; GRK2; Beta-adrenergic receptor kinase 1; Beta-ARK-1; G-protein

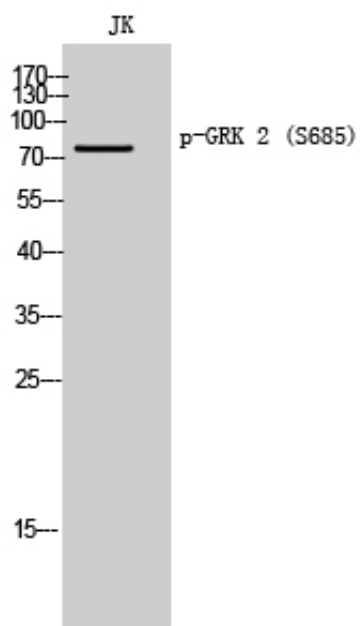


coupled receptor kinase 2

Molecular
Weight :

80KD

Product Images



Western Blot analysis of JK cells using Phospho-GRK 2 (S685) Polyclonal Antibody diluted at 1 : 500