

Bcl-6 (phospho Ser333) Polyclonal Antibody

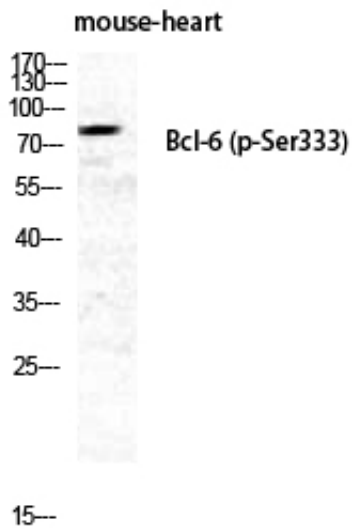
| | |
|---------------------|--|
| Catalog_no : | AP0460 |
| Applications : | WB,ELISA |
| Reactivity : | Human,Mouse,Rat |
| Category : | 抗原抗体 |
| Size : | 100µg/50µg/20µg |
| Gene_name : | BCL6 |
| Protein_name : | B-cell lymphoma 6 protein |
| Humangene_id : | 604 |
| Humanswissprot_no : | P41182 |
| Mousegene_id : | 12053 |
| Mouseswissprot_no : | P41183 |
| Immunogen : | The antiserum was produced against synthesized peptide derived from human Bcl-6 around the phosphorylation site of Ser333. AA range:299-348 |
| Specificity : | Phospho-Bcl-6 (S333) Polyclonal Antibody detects endogenous levels of Bcl-6 protein only when phosphorylated at S333. |
| Formulation : | Liquid in PBS containing 50% glycerol, 0.5% BSA and 0.02% sodium azide. |
| Source : | Rabbit |
| Dilution : | Western Blot: 1/500 - 1/2000. ELISA: 1/5000. Not yet tested in other applications. |
| Purification : | The antibody was affinity-purified from rabbit antiserum by affinity-chromatography using epitope-specific immunogen. |
| Concentration : | 1 mg/ml |
| Storage_stability : | -20°C/1 year |
| Msds : | MSDS_Antibody.pdf |
| Other_name : | BCL6; BCL5; LAZ3; ZBTB27; ZNF51; B-cell lymphoma 6 protein; BCL-6; B-cell lymphoma 5 protein; BCL-5; Protein LAZ-3; Zinc finger and BTB domain-containing protein 27; Zinc finger protein 51 |



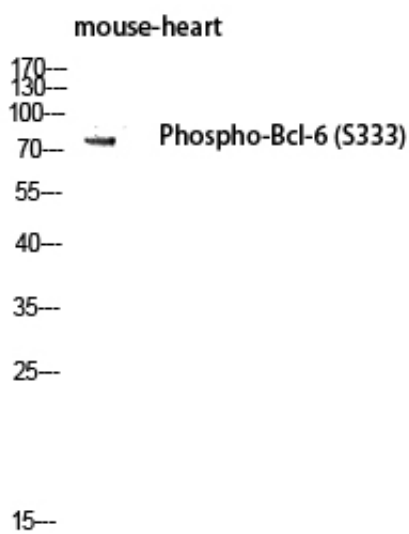
Molecular
Weight :

79KD

Product Images



Western Blot analysis of MOUSE-HEART cells using Phospho-Bcl-6 (S333) Polyclonal Antibody diluted at 1 : 1000 cells nucleus extracted by Minute TM Cytoplasmic and Nuclear Fractionation kit (SC-003, Inventbiotech, MN, USA).



Western blot analysis of mouse-heart lysis using Phospho-Bcl-6 (S333) antibody. Antibody was diluted at 1:1000 cells nucleus extracted by Minute TM Cytoplasmic and Nuclear Fractionation kit (SC-003, Inventbiotech, MN, USA).