

C/EBP  $\alpha$  (phospho Thr230) Polyclonal Antibody

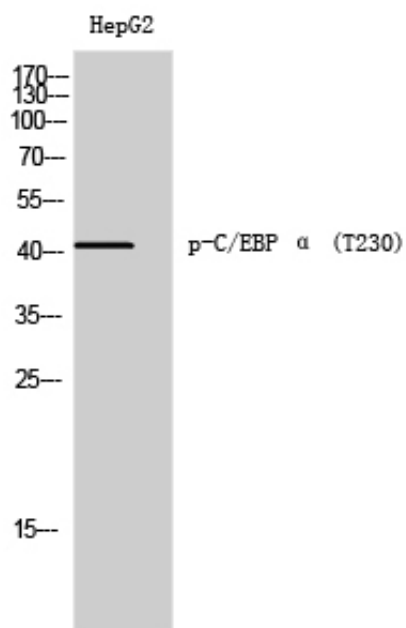
Catalog_no :	AP0463
Applications :	WB,ELISA
Reactivity :	Human,Mouse,Rat
Category :	抗原抗体
Size :	100 $\mu$ g/50 $\mu$ g/20 $\mu$ g
Gene_name :	CEBPA
Protein_name :	CCAAT/enhancer-binding protein alpha
Humangene_id	<a href="#">1050</a>
:	
Humanswissprot	<a href="#">P49715</a>
_no :	
Mousegene_id :	<a href="#">12606</a>
Mouseswissprot	<a href="#">P53566</a>
_no :	
Ratgene_id :	<a href="#">24252</a>
Ratswissprot_no	<a href="#">P05554</a>
:	
Immunogen :	Synthesized phospho-peptide around the phosphorylation site of human C/EBP $\alpha$ (phospho Thr230)
Specificity :	Phospho-C/EBP $\alpha$ (T230) Polyclonal Antibody detects endogenous levels of C/EBP $\alpha$ protein only when phosphorylated at T230.
Formulation :	Liquid in PBS containing 50% glycerol, 0.5% BSA and 0.02% sodium azide.
Source :	Rabbit
Dilution :	Western Blot: 1/500 - 1/2000. ELISA: 1/10000. Not yet tested in other applications.
Purification :	The antibody was affinity-purified from rabbit antiserum by affinity-chromatography using epitope-specific immunogen.
Concentration :	1 mg/ml
Storage_stability	-20°C/1 year
:	
Msds :	MSDS_Antibody.pdf



Other\_name : CEBPA; CCAAT/enhancer-binding protein alpha; C/EBP alpha

Molecular Weight : 42KD

## Product Images



Western Blot analysis of HepG2 cells using Phospho-C/EBP  $\alpha$  (T230) Polyclonal Antibody cells nucleus extracted by Minute TM Cytoplasmic and Nuclear Fractionation kit (SC-003, Invent biotech, MN, USA).