

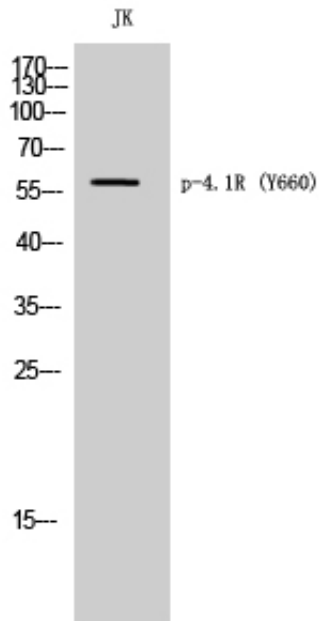
4.1R (phospho Tyr660) Polyclonal Antibody

Catalog_no :	AP0468
Applications :	WB,IHC-p,ELISA
Reactivity :	Human,Mouse
Category :	抗原抗体
Size :	100µg/50µg/20µg
Gene_name :	EPB41
Protein_name :	Protein 4.1
Humangene_id :	2035
Humanswissprot_no :	P11171
Mousegene_id :	269587
Mouseswissprot_no :	P48193
Immunogen :	The antiserum was produced against synthesized peptide derived from human EPB41 around the phosphorylation site of Tyr660/418. AA range:626-675
Specificity :	Phospho-4.1R (Y660) Polyclonal Antibody detects endogenous levels of 4.1R protein only when phosphorylated at Y660.
Formulation :	Liquid in PBS containing 50% glycerol, 0.5% BSA and 0.02% sodium azide.
Source :	Rabbit
Dilution :	Western Blot: 1/500 - 1/2000. Immunohistochemistry: 1/100 - 1/300. ELISA: 1/5000. Not yet tested in other applications.
Purification :	The antibody was affinity-purified from rabbit antiserum by affinity-chromatography using epitope-specific immunogen.
Concentration :	1 mg/ml
Storage_stability :	-20°C/1 year
Msds :	MSDS_Antibody.pdf
Other_name :	EPB41; E41P; Protein 4.1; P4.1; 4.1R; Band 4.1; EPB4.1
Molecular	60KD

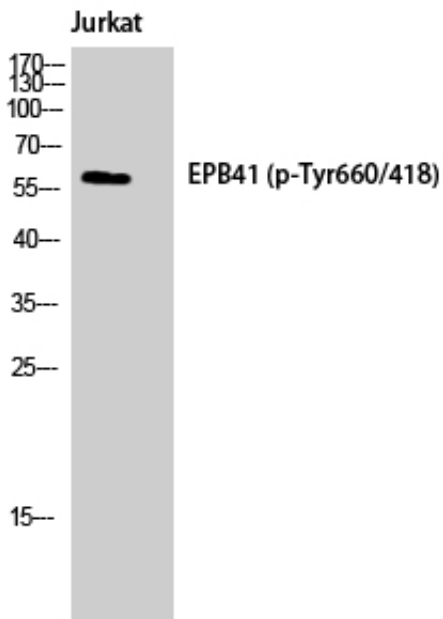


Weight :

Product Images



Western Blot analysis of JK cells using Phospho-4.1R (Y660) Polyclonal Antibody



Western Blot analysis of Jurkat cells using Phospho-4.1R (Y660) Polyclonal Antibody