

## RPA p32 (phospho Ser33) Polyclonal Antibody

Catalog_no :	AP0476
Applications :	WB,ELISA
Reactivity :	Human,Mouse,Rat
Category :	抗原抗体
Size :	100µg/50µg/20µg
Gene_name :	RPA2
Protein_name :	Replication protein A 32 kDa subunit
Humangene_id	<a href="#">6118</a>
:	
Humanswissprot	<a href="#">P15927</a>
_no :	
Mouseswissprot	<a href="#">Q62193</a>
_no :	
Ratgene_id :	<a href="#">59102</a>
Ratswissprot_no	<a href="#">Q63528</a>
:	
Immunogen :	The antiserum was produced against synthesized peptide derived from human RFA2 around the phosphorylation site of Ser33. AA range:1-50
Specificity :	Phospho-RPA p32 (S33) Polyclonal Antibody detects endogenous levels of RPA p32 protein only when phosphorylated at S33.
Formulation :	Liquid in PBS containing 50% glycerol, 0.5% BSA and 0.02% sodium azide.
Source :	Rabbit
Dilution :	Western Blot: 1/500 - 1/2000. ELISA: 1/10000. Not yet tested in other applications.
Purification :	The antibody was affinity-purified from rabbit antiserum by affinity-chromatography using epitope-specific immunogen.
Concentration :	1 mg/ml
Storage_stability	-20°C/1 year
:	
Msds :	<a href="#">MSDS_Antibody.pdf</a>
Other_name :	RPA2; REPA2; RPA32; RPA34; Replication protein A 32 kDa subunit; RP-A p32; Replication

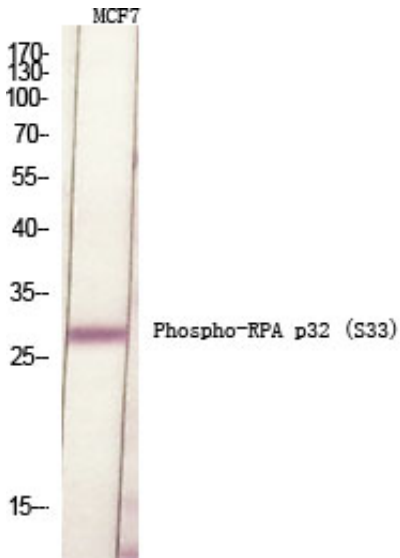


factor A protein 2; RF-A protein 2; Replication protein A 34 kDa subunit; RP-A p34

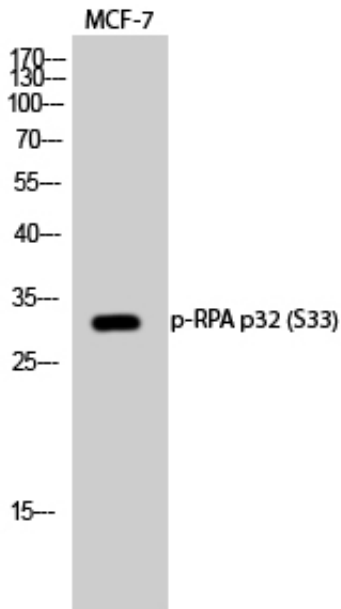
Molecular  
Weight :

32KD

## Product Images



Western Blot analysis of various cells using Phospho-RPA p32 (S33) Polyclonal Antibody diluted at 1 : 500 cells nucleus extracted by Minute TM Cytoplasmic and Nuclear Fractionation kit (SC-003, Inventbiotech, MN, USA).



Western Blot analysis of MCF-7 cells using Phospho-RPA p32 (S33) Polyclonal Antibody diluted at 1 : 500 cells nucleus extracted by Minute TM Cytoplasmic and Nuclear Fractionation kit (SC-003, Inventbiotech, MN, USA).