

VCP (phospho Ser352) Polyclonal Antibody

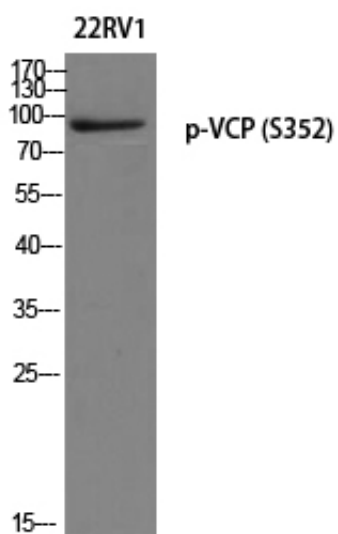
Catalog_no :	AP0480
Applications :	WB,ELISA
Reactivity :	Human,Mouse,Rat
Category :	抗原抗体
Size :	100µg/50µg/20µg
Gene_name :	VCP
Protein_name :	Transitional endoplasmic reticulum ATPase
Humangene_id :	7415
Humanswissprot_no :	P55072
Mousegene_id :	269523
Mouseswissprot_no :	Q01853
Ratgene_id :	116643
Ratswissprot_no :	P46462
Immunogen :	The antiserum was produced against synthesized peptide derived from human VCP around the phosphorylation site of Ser352. AA range:318-367
Specificity :	Phospho-VCP (S352) Polyclonal Antibody detects endogenous levels of VCP protein only when phosphorylated at S352.
Formulation :	Liquid in PBS containing 50% glycerol, 0.5% BSA and 0.02% sodium azide.
Source :	Rabbit
Dilution :	Western Blot: 1/500 - 1/2000. ELISA: 1/5000. Not yet tested in other applications.
Purification :	The antibody was affinity-purified from rabbit antiserum by affinity-chromatography using epitope-specific immunogen.
Concentration :	1 mg/ml
Storage_stability :	-20°C/1 year
Msds :	MSDS_Antibody.pdf



Other_name : VCP; Transitional endoplasmic reticulum ATPase; TER ATPase; 15S Mg(2+)-ATPase p97 subunit; Valosin-containing protein; VCP

Molecular Weight : 85KD

Product Images



Western blot analysis of 22RV1 using p-VCP (S352) antibody. Antibody was diluted at 1:1000