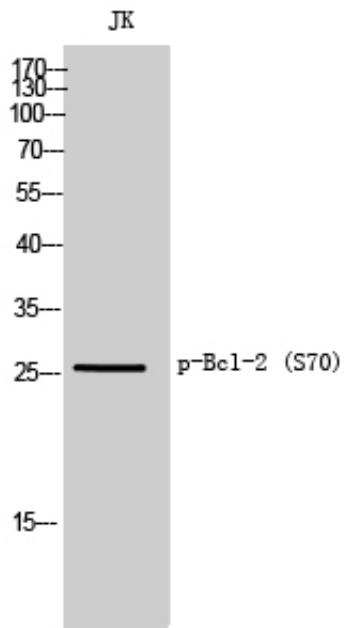




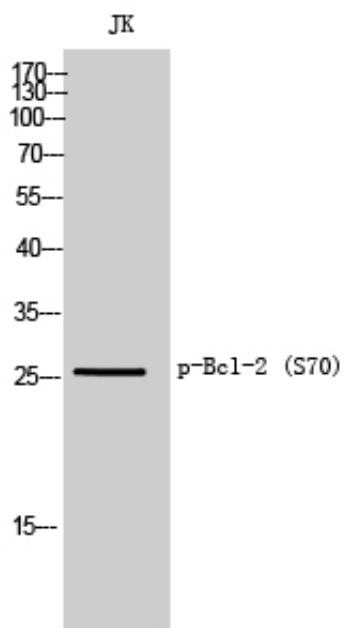
Bcl-2 (phospho Ser70) Polyclonal Antibody

Catalog_no :	AP0492
Applications :	WB,ELISA
Reactivity :	Mouse,Rat
Category :	抗原抗体
Size :	100µg/50µg/20µg
Gene_name :	BCL2
Protein_name :	Apoptosis regulator Bcl-2
Mousegene_id :	12043
Ratgene_id :	24224
Ratswissprot_no :	P49950
Immunogen :	The antiserum was produced against synthesized peptide derived from human BCL2 around the phosphorylation site of Ser70. AA range:36-85
Specificity :	Phospho-Bcl-2 (S70) Polyclonal Antibody detects endogenous levels of Bcl-2 protein only when phosphorylated at S70.
Formulation :	Liquid in PBS containing 50% glycerol, 0.5% BSA and 0.02% sodium azide.
Source :	Rabbit
Dilution :	Western Blot: 1/500 - 1/2000. ELISA: 1/40000. Not yet tested in other applications.
Purification :	The antibody was affinity-purified from rabbit antiserum by affinity-chromatography using epitope-specific immunogen.
Concentration :	1 mg/ml
Storage_stability :	-20°C/1 year
Msds :	MSDS_Antibody.pdf
Other_name :	BCL2; Apoptosis regulator Bcl-2
Molecular Weight :	26KD

Product Images



Western Blot analysis of JK cells using Phospho-Bcl-2 (S70) Polyclonal Antibody



Western Blot analysis of Jurkat cells using Phospho-Bcl-2 (S70) Polyclonal Antibody