

## TPH2 (phospho Ser19) Polyclonal Antibody

Catalog_no :	AP0501
Applications :	WB,ELISA
Reactivity :	Human,Mouse,Rat
Category :	抗原抗体
Size :	100µg/50µg/20µg
Gene_name :	TPH2
Protein_name :	Tryptophan 5-hydroxylase 2
Humangene_id :	<a href="#">121278</a>
Humanswissprot_no :	<a href="#">Q8IWU9</a>
Mousegene_id :	<a href="#">216343</a>
Mouseswissprot_no :	<a href="#">Q8CGV2</a>
Ratgene_id :	<a href="#">317675</a>
Ratswissprot_no :	<a href="#">Q8CGU9</a>
Immunogen :	Synthesized phospho-peptide around the phosphorylation site of human TPH2 (phospho Ser19)
Specificity :	Phospho-TPH2 (S19) Polyclonal Antibody detects endogenous levels of TPH2 protein only when phosphorylated at S19.
Formulation :	Liquid in PBS containing 50% glycerol, 0.5% BSA and 0.02% sodium azide.
Source :	Rabbit
Dilution :	Western Blot: 1/500 - 1/2000. ELISA: 1/40000. Not yet tested in other applications.
Purification :	The antibody was affinity-purified from rabbit antiserum by affinity-chromatography using epitope-specific immunogen.
Concentration :	1 mg/ml
Storage_stability :	-20°C/1 year
Msds :	MSDS_Antibody.pdf



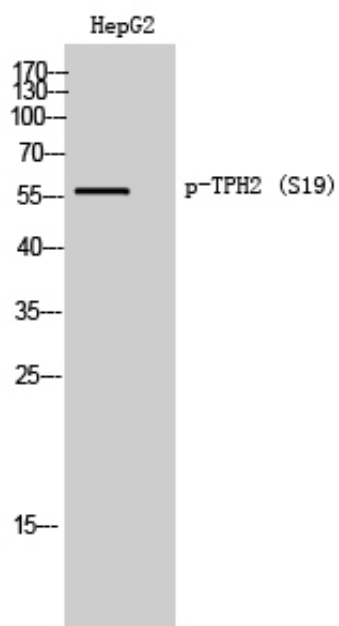
Other\_name : TPH2; NTPH; Tryptophan 5-hydroxylase 2; Neuronal tryptophan hydroxylase;  
Tryptophan 5-monoxygenase 2

---

Molecular Weight : 56KD

---

## Product Images



Western Blot analysis of HepG2 cells using Phospho-TPH2 (S19) Polyclonal Antibody