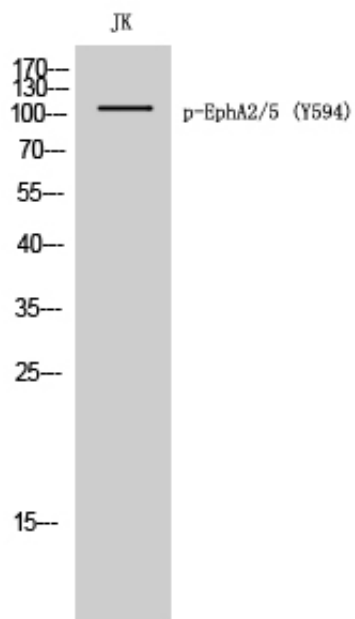


EphA2/5 (phospho Tyr594) Polyclonal Antibody

Catalog_no :	AP0506
Applications :	WB,ELISA
Reactivity :	Human,Mouse
Category :	抗原抗体
Size :	100µg/50µg/20µg
Gene_name :	EPHA2/EPHA5
Protein_name :	Ephrin type-A receptor 2/5
Humangene_id :	1969/2044
Humanswissprot_no :	P29317/P54756
Mousegene_id :	13836/13839
Immunogen :	Synthesized phospho-peptide around the phosphorylation site of human EphA2/5 (phospho Tyr594)
Specificity :	Phospho-EphA2/5 (Y594) Polyclonal Antibody detects endogenous levels of EphA2/5 protein only when phosphorylated at Y594.
Formulation :	Liquid in PBS containing 50% glycerol, 0.5% BSA and 0.02% sodium azide.
Source :	Rabbit
Dilution :	Western Blot: 1/500 - 1/2000. ELISA: 1/10000. Not yet tested in other applications.
Purification :	The antibody was affinity-purified from rabbit antiserum by affinity-chromatography using epitope-specific immunogen.
Concentration :	1 mg/ml
Storage_stability :	-20°C/1 year
Msds :	MSDS_Antibody.pdf
Other_name :	EPHA2; ECK; Ephrin type-A receptor 2; Epithelial cell kinase; Tyrosine-protein kinase receptor ECK; EPHA5; BSK; EHK1; HEK7; TYRO4; Ephrin type-A receptor 5; Brain-specific kinase; EPH homology kinase 1; EHK-1; EPH-like kinase 7; EK7; hEK7
Molecular Weight :	110KD

Product Images



Western Blot analysis of JK cells using Phospho-EphA2/5 (Y594) Polyclonal Antibody