

EphA7 (phospho Tyr791) Polyclonal Antibody

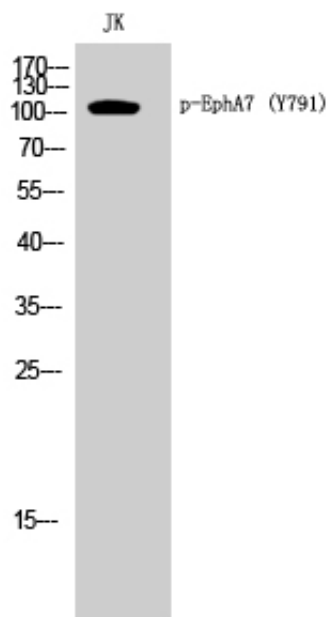
Catalog_no :	AP0508
Applications :	WB,ELISA
Reactivity :	Human,Mouse,Rat
Category :	抗原抗体
Size :	100µg/50µg/20µg
Gene_name :	EPHA7
Protein_name :	Ephrin type-A receptor 7
Humangene_id :	2045
Humanswissprot_no :	Q15375
Mousegene_id :	13841
Mouseswissprot_no :	Q61772
Ratgene_id :	171287
Ratswissprot_no :	P54759
Immunogen :	Synthesized phospho-peptide around the phosphorylation site of human EphA7 (phospho Tyr791)
Specificity :	Phospho-EphA7 (Y791) Polyclonal Antibody detects endogenous levels of EphA7 protein only when phosphorylated at Y791.
Formulation :	Liquid in PBS containing 50% glycerol, 0.5% BSA and 0.02% sodium azide.
Source :	Rabbit
Dilution :	Western Blot: 1/500 - 1/2000. ELISA: 1/10000. Not yet tested in other applications.
Purification :	The antibody was affinity-purified from rabbit antiserum by affinity-chromatography using epitope-specific immunogen.
Concentration :	1 mg/ml
Storage_stability :	-20°C/1 year
Msds :	MSDS_Antibody.pdf



Other_name : EPHA7; EHK3; HEK11; Ephrin type-A receptor 7; EPH homology kinase 3; EHK-3; EPH-like kinase 11; EK11; hEK11

Molecular Weight : 112KD

Product Images



Western Blot analysis of JK cells using Phospho-EphA7 (Y791) Polyclonal Antibody