

FGFR-4 (phospho Tyr642) Polyclonal Antibody

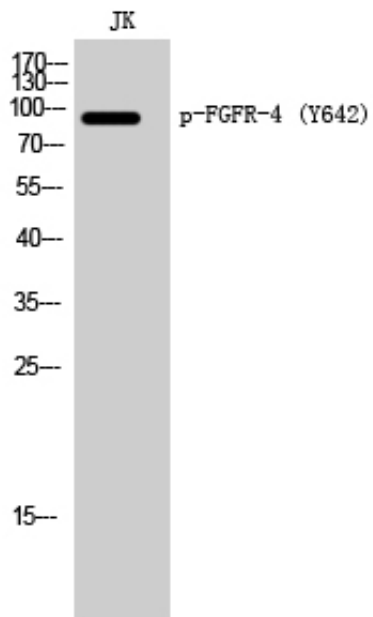
Catalog_no :	AP0509
Applications :	WB,ELISA
Reactivity :	Human,Mouse,Rat
Category :	抗原抗体
Size :	100µg/50µg/20µg
Gene_name :	FGFR4
Protein_name :	Fibroblast growth factor receptor 4
Humangene_id :	2264
Humanswissprot_no :	P22455
Mousegene_id :	14186
Mouseswissprot_no :	Q03142
Ratgene_id :	25114
Ratswissprot_no :	Q498D6
Immunogen :	Synthesized phospho-peptide around the phosphorylation site of human FGFR-4 (phospho Tyr642)
Specificity :	Phospho-FGFR-4 (Y642) Polyclonal Antibody detects endogenous levels of FGFR-4 protein only when phosphorylated at Y642.
Formulation :	Liquid in PBS containing 50% glycerol, 0.5% BSA and 0.02% sodium azide.
Source :	Rabbit
Dilution :	Western Blot: 1/500 - 1/2000. ELISA: 1/10000. Not yet tested in other applications.
Purification :	The antibody was affinity-purified from rabbit antiserum by affinity-chromatography using epitope-specific immunogen.
Concentration :	1 mg/ml
Storage_stability :	-20°C/1 year
Msds :	MSDS_Antibody.pdf



Other_name : FGFR4; JTK2; TKF; Fibroblast growth factor receptor 4; FGFR-4; CD antigen CD334

Molecular Weight : 90KD

Product Images



Western Blot analysis of JK cells using Phospho-FGFR-4 (Y642) Polyclonal Antibody