

MSK1 (phospho Ser376) Polyclonal Antibody

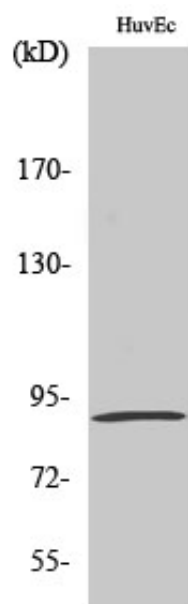
Catalog_no :	AP0517
Applications :	WB,IF,ELISA
Reactivity :	Human,Mouse
Category :	抗原抗体
Size :	100µg/50µg/20µg
Gene_name :	RPS6KA5
Protein_name :	Ribosomal protein S6 kinase alpha-5
Humangene_id :	9252
Humanswissprot_no :	O75582
Mousegene_id :	73086
Mouseswissprot_no :	Q8C050
Immunogen :	The antiserum was produced against synthesized peptide derived from human MSK1 around the phosphorylation site of Ser376. AA range:343-392
Specificity :	Phospho-MSK1 (S376) Polyclonal Antibody detects endogenous levels of MSK1 protein only when phosphorylated at S376.
Formulation :	Liquid in PBS containing 50% glycerol, 0.5% BSA and 0.02% sodium azide.
Source :	Rabbit
Dilution :	Western Blot: 1/500 - 1/2000. Immunofluorescence: 1/200 - 1/1000. ELISA: 1/20000. Not yet tested in other applications.
Purification :	The antibody was affinity-purified from rabbit antiserum by affinity-chromatography using epitope-specific immunogen.
Concentration :	1 mg/ml
Storage_stability :	-20°C/1 year
Msds :	MSDS_Antibody.pdf
Other_name :	RPS6KA5; MSK1; Ribosomal protein S6 kinase alpha-5; S6K-alpha-5; 90 kDa ribosomal protein S6 kinase 5; Nuclear mitogen- and stress-activated protein kinase 1; RSK-like protein kinase; RSKL



Molecular
Weight :

90KD

Product Images



Western Blot analysis of various cells using Phospho-MSK1 (S376) Polyclonal Antibody diluted at 1 : 1000