

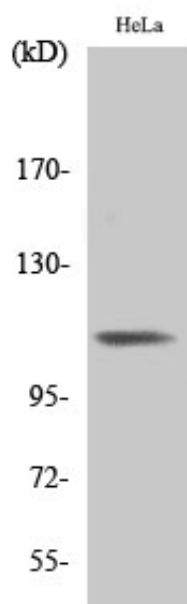
Integrin β 3 (phospho Tyr785) Polyclonal Antibody

Catalog_no :	AP0524
Applications :	WB,ELISA
Reactivity :	Human,Mouse,Rat
Category :	抗原抗体
Size :	100 μ g/50 μ g/20 μ g
Gene_name :	ITGB3
Protein_name :	Integrin beta-3
Humangene_id :	3690
Humanswissprot_no :	P05106
Mousegene_id :	16416
Mouseswissprot_no :	O54890
Immunogen :	The antiserum was produced against synthesized peptide derived from human Integrin beta3 around the phosphorylation site of Tyr785. AA range:739-788
Specificity :	Phospho-Integrin β 3 (Y785) Polyclonal Antibody detects endogenous levels of Integrin β 3 protein only when phosphorylated at Y785.
Formulation :	Liquid in PBS containing 50% glycerol, 0.5% BSA and 0.02% sodium azide.
Source :	Rabbit
Dilution :	Western Blot: 1/500 - 1/2000. ELISA: 1/10000. Not yet tested in other applications.
Purification :	The antibody was affinity-purified from rabbit antiserum by affinity-chromatography using epitope-specific immunogen.
Concentration :	1 mg/ml
Storage_stability :	-20°C/1 year
Msds :	MSDS_Antibody.pdf
Other_name :	ITGB3; GP3A; Integrin beta-3; Platelet membrane glycoprotein IIIa; GPIIIa; CD antigen CD61
Molecular	87KD



Weight :

Product Images



Western Blot analysis of various cells using Phospho-Integrin $\beta 3$ (Y785) Polyclonal Antibody diluted at 1 : 500