

## Crk II (phospho Tyr221) Polyclonal Antibody

Catalog_no :	AP0527
Applications :	WB,IF,ELISA
Reactivity :	Human,Mouse,Rat,Monkey
Category :	抗原抗体
Size :	100µg/50µg/20µg
Gene_name :	CRK
Protein_name :	Adapter molecule crk
Humangene_id :	<a href="#">1398</a>
Humanswissprot_no :	<a href="#">P46108</a>
Mousegene_id :	<a href="#">12928</a>
Mouseswissprot_no :	<a href="#">Q64010</a>
Ratgene_id :	<a href="#">54245</a>
Ratswissprot_no :	<a href="#">Q63768</a>
Immunogen :	The antiserum was produced against synthesized peptide derived from human CrkII around the phosphorylation site of Tyr221. AA range:187-236
Specificity :	Phospho-Crk II (Y221) Polyclonal Antibody detects endogenous levels of Crk II protein only when phosphorylated at Y221.
Formulation :	Liquid in PBS containing 50% glycerol, 0.5% BSA and 0.02% sodium azide.
Source :	Rabbit
Dilution :	Western Blot: 1/500 - 1/2000. Immunofluorescence: 1/200 - 1/1000. ELISA: 1/40000. Not yet tested in other applications.
Purification :	The antibody was affinity-purified from rabbit antiserum by affinity-chromatography using epitope-specific immunogen.
Concentration :	1 mg/ml
Storage_stability :	-20°C/1 year

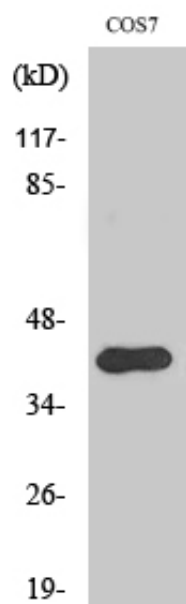


Msd : MSDS\_Antibody.pdf

Other\_name : CRK; Adapter molecule crk; Proto-oncogene c-Crk; p38

Molecular Weight : 40KD

## Product Images



Western Blot analysis of various cells using Phospho-Crk II (Y221) Polyclonal Antibody