

## Flg (phospho Tyr654) Polyclonal Antibody

Catalog_no :	AP0528
Applications :	WB,IF,ELISA
Reactivity :	Human,Mouse,Rat
Category :	抗原抗体
Size :	100µg/50µg/20µg
Gene_name :	FGFR1
Protein_name :	Fibroblast growth factor receptor 1
Humangene_id :	<a href="#">2260</a>
Humanswissprot_no :	<a href="#">P11362</a>
Mousegene_id :	<a href="#">14182</a>
Mouseswissprot_no :	<a href="#">P16092</a>
Ratgene_id :	<a href="#">79114</a>
Ratswissprot_no :	<a href="#">Q04589</a>
Immunogen :	The antiserum was produced against synthesized peptide derived from human FGFR1 around the phosphorylation site of Tyr654. AA range:626-675
Specificity :	Phospho-Flg (Y654) Polyclonal Antibody detects endogenous levels of Flg protein only when phosphorylated at Y654.
Formulation :	Liquid in PBS containing 50% glycerol, 0.5% BSA and 0.02% sodium azide.
Source :	Rabbit
Dilution :	Western Blot: 1/500 - 1/2000. Immunofluorescence: 1/200 - 1/1000. ELISA: 1/20000. Not yet tested in other applications.
Purification :	The antibody was affinity-purified from rabbit antiserum by affinity-chromatography using epitope-specific immunogen.
Concentration :	1 mg/ml
Storage_stability :	-20°C/1 year

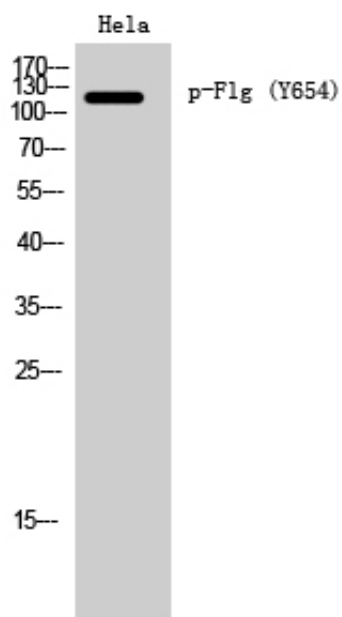


MsdS : MSDS\_Antibody.pdf

Other\_name : FGFR1; BFGFR; CEK; FGFBR; FLG; FLT2; HBGFR; Fibroblast growth factor receptor 1; FGFR-1; Basic fibroblast growth factor receptor 1; BFGFR; bFGF-R-1; Fms-like tyrosine kinase 2; FLT-2; N-sam; Proto-oncogene c-Fgr; CD antigen CD331

Molecular Weight : 120KD

## Product Images



Western Blot analysis of HeLa cells using Phospho-Flg (Y654) Polyclonal Antibody diluted at 1 : 1000