

## PR (phospho Ser294) Polyclonal Antibody

|                   |   |
|-------------------|---|
| Catalog_no :      | AP0531  |
| Applications :    | WB,IF,ELISA   |
| Reactivity :      | Human,Mouse,Rat   |
| Category :        | 抗原抗体  |
| Size :            | 100µg/50µg/20µg   |
| Gene_name :       | PGR   |
| Protein_name :    | Progesterone receptor   |
| Humangene_id      | <a href="#">5241</a>  |
| :                 |   |
| Humanswissprot    | <a href="#">P06401</a>  |
| _no :             |   |
| Mouseswissprot    | <a href="#">Q00175</a>  |
| _no :             |   |
| Ratgene_id :      | <a href="#">25154</a>   |
| Ratswissprot_no   | <a href="#">Q63449</a>  |
| :                 |   |
| Immunogen :       | The antiserum was produced against synthesized peptide derived from human Progesterone Receptor around the phosphorylation site of Ser294. AA range:261-310 |
| Specificity :     | Phospho-PR (S294) Polyclonal Antibody detects endogenous levels of PR protein only when phosphorylated at S294.   |
| Formulation :     | Liquid in PBS containing 50% glycerol, 0.5% BSA and 0.02% sodium azide.   |
| Source :          | Rabbit  |
| Dilution :        | Western Blot: 1/500 - 1/2000. Immunofluorescence: 1/200 - 1/1000. ELISA: 1/5000. Not yet tested in other applications.                                      |
| Purification :    | The antibody was affinity-purified from rabbit antiserum by affinity-chromatography using epitope-specific immunogen.                                       |
| Concentration :   | 1 mg/ml   |
| Storage_stability | -20°C/1 year  |
| :                 |   |
| Msds :            | <a href="#">MSDS_Antibody.pdf</a>   |



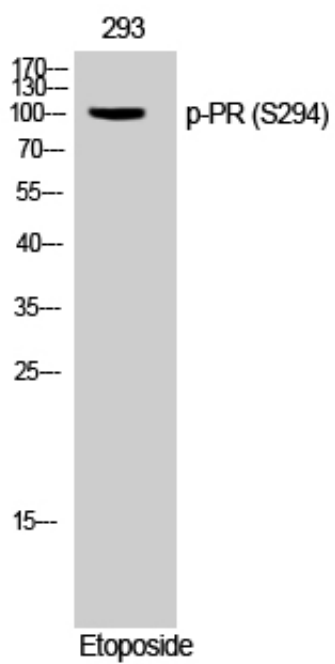
Other\_name : PGR; NR3C3; Progesterone receptor; PR; Nuclear receptor subfamily 3 group C member 3

---

Molecular Weight : 98KD

---

## Product Images



Western Blot analysis of 293 cells using Phospho-PR (S294) Polyclonal Antibody