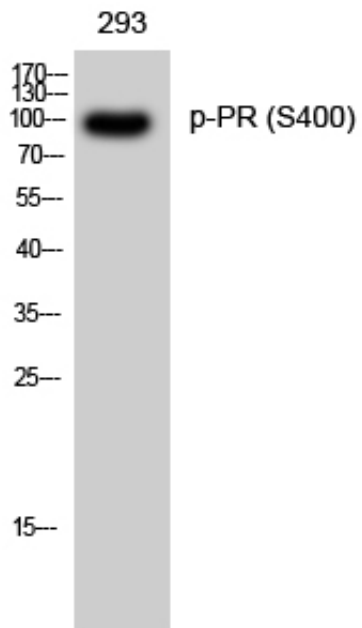


PR (phospho Ser400) Polyclonal Antibody

Catalog_no :	AP0532
Applications :	WB,IF,ELISA
Reactivity :	Human
Category :	抗原抗体
Size :	100µg/50µg/20µg
Gene_name :	PGR
Protein_name :	Progesterone receptor
Humangene_id :	5241
Humanswissprot_no :	P06401
Immunogen :	The antiserum was produced against synthesized peptide derived from human Progesterone Receptor around the phosphorylation site of Ser400. AA range:371-420
Specificity :	Phospho-PR (S400) Polyclonal Antibody detects endogenous levels of PR protein only when phosphorylated at S400.
Formulation :	Liquid in PBS containing 50% glycerol, 0.5% BSA and 0.02% sodium azide.
Source :	Rabbit
Dilution :	Western Blot: 1/500 - 1/2000. Immunofluorescence: 1/200 - 1/1000. ELISA: 1/5000. Not yet tested in other applications.
Purification :	The antibody was affinity-purified from rabbit antiserum by affinity-chromatography using epitope-specific immunogen.
Concentration :	1 mg/ml
Storage_stability :	-20°C/1 year
Msds :	MSDS_Antibody.pdf
Other_name :	PGR; NR3C3; Progesterone receptor; PR; Nuclear receptor subfamily 3 group C member 3
Molecular Weight :	99KD

Product Images



Western Blot analysis of 293 cells using Phospho-PR (S400) Polyclonal Antibody