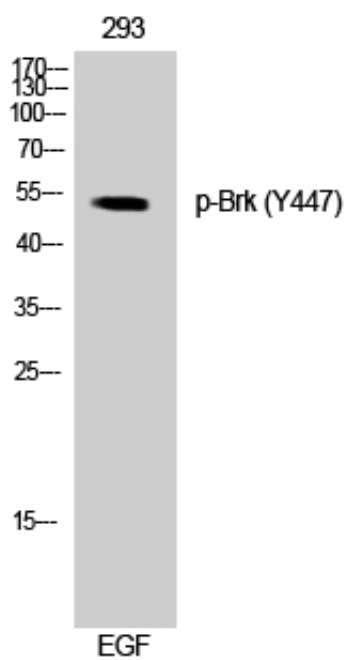


Brk (phospho Tyr447) Polyclonal Antibody

Catalog_no :	AP0537
Applications :	WB,IF,ELISA
Reactivity :	Human
Category :	抗原抗体
Size :	100µg/50µg/20µg
Gene_name :	PTK6
Protein_name :	Protein-tyrosine kinase 6
Humangene_id :	5753
Humanswissprot_no :	Q13882
Immunogen :	The antiserum was produced against synthesized peptide derived from human Breast Tumor Kinase around the phosphorylation site of Tyr447. AA range:402-451
Specificity :	Phospho-Brk (Y447) Polyclonal Antibody detects endogenous levels of Brk protein only when phosphorylated at Y447.
Formulation :	Liquid in PBS containing 50% glycerol, 0.5% BSA and 0.02% sodium azide.
Source :	Rabbit
Dilution :	Western Blot: 1/500 - 1/2000. Immunofluorescence: 1/200 - 1/1000. ELISA: 1/5000. Not yet tested in other applications.
Purification :	The antibody was affinity-purified from rabbit antiserum by affinity-chromatography using epitope-specific immunogen.
Concentration :	1 mg/ml
Storage_stability :	-20°C/1 year
Msds :	MSDS_Antibody.pdf
Other_name :	PTK6; BRK; Protein-tyrosine kinase 6; Breast tumor kinase; Tyrosine-protein kinase BRK
Molecular Weight :	50KD

Product Images



Western Blot analysis of 293 cells using Phospho-Brk (Y447) Polyclonal Antibody