

## Chk2 (phospho Thr383) Polyclonal Antibody

Catalog_no :	AP0538
Applications :	WB,IF,ELISA
Reactivity :	Human,Mouse,Rat,Monkey
Category :	抗原抗体
Size :	100µg/50µg/20µg
Gene_name :	CHEK2
Protein_name :	Serine/threonine-protein kinase Chk2
Humangene_id :	<a href="#">11200</a>
Humanswissprot_no :	<a href="#">O96017</a>
Mousegene_id :	<a href="#">50883</a>
Mouseswissprot_no :	<a href="#">Q9Z265</a>
Immunogen :	The antiserum was produced against synthesized peptide derived from human Chk2 around the phosphorylation site of Thr383. AA range:356-405
Specificity :	Phospho-Chk2 (T383) Polyclonal Antibody detects endogenous levels of Chk2 protein only when phosphorylated at T383.
Formulation :	Liquid in PBS containing 50% glycerol, 0.5% BSA and 0.02% sodium azide.
Source :	Rabbit
Dilution :	Western Blot: 1/500 - 1/2000. Immunofluorescence: 1/200 - 1/1000. ELISA: 1/20000. Not yet tested in other applications.
Purification :	The antibody was affinity-purified from rabbit antiserum by affinity-chromatography using epitope-specific immunogen.
Concentration :	1 mg/ml
Storage_stability :	-20°C/1 year
Msds :	<a href="#">MSDS_Antibody.pdf</a>
Other_name :	CHEK2; CDS1; CHK2; RAD53; Serine/threonine-protein kinase Chk2; CHK2 checkpoint homolog; Cds1 homolog; Hucds1; hCds1; Checkpoint kinase 2

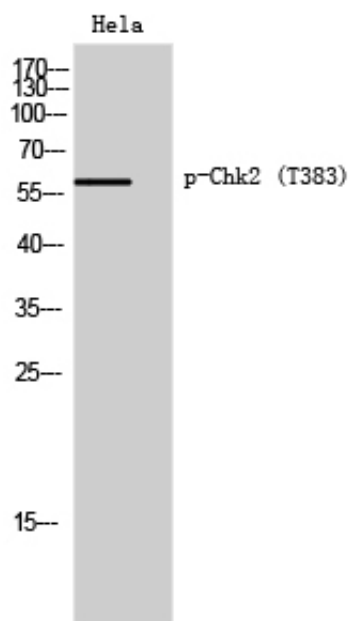


Molecular  
Weight :

60KD

---

## Product Images



Western Blot analysis of HeLa cells using Phospho-Chk2 (T383) Polyclonal Antibody diluted at 1 : 1000 cells nucleus extracted by Minute TM Cytoplasmic and Nuclear Fractionation kit (SC-003, Invent biotech, MN, USA).