

## CD5 (phospho Tyr453) Polyclonal Antibody

Catalog_no :	AP0544
Applications :	WB,IHC-p,IF,ELISA
Reactivity :	Human,Mouse,Rat
Category :	抗原抗体
Size :	100µg/50µg/20µg
Gene_name :	CD5
Protein_name :	T-cell surface glycoprotein CD5
Humangene_id :	<a href="#">921</a>
Humanswissprot_no :	<a href="#">P06127</a>
Mousegene_id :	<a href="#">12507</a>
Mouseswissprot_no :	<a href="#">P13379</a>
Ratgene_id :	<a href="#">54236</a>
Ratswissprot_no :	<a href="#">P51882</a>
Immunogen :	The antiserum was produced against synthesized peptide derived from human CD5 around the phosphorylation site of Tyr453. AA range:421-470
Specificity :	Phospho-CD5 (Y453) Polyclonal Antibody detects endogenous levels of CD5 protein only when phosphorylated at Y453.
Formulation :	Liquid in PBS containing 50% glycerol, 0.5% BSA and 0.02% sodium azide.
Source :	Rabbit
Dilution :	Western Blot: 1/500 - 1/2000. Immunohistochemistry: 1/100 - 1/300. Immunofluorescence: 1/200 - 1/1000. ELISA: 1/20000. Not yet tested in other applications.
Purification :	The antibody was affinity-purified from rabbit antiserum by affinity-chromatography using epitope-specific immunogen.
Concentration :	1 mg/ml
Storage_stability :	-20°C/1 year

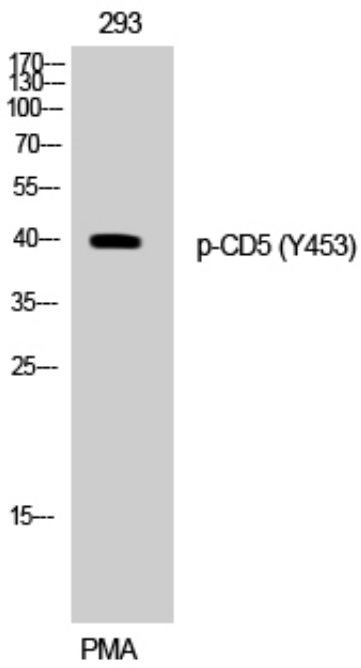


---

MsdS :	<a href="#">MSDS_Antibody.pdf</a>
Other_name :	<a href="#">CD5; LEU1; T-cell surface glycoprotein CD5; Lymphocyte antigen T1/Leu-1; CD antigen CD5</a>
Molecular Weight :	<a href="#">40KD</a>

---

## Product Images



Western Blot analysis of 293 cells using Phospho-CD5 (Y453) Polyclonal Antibody