

BAM32 (phospho Tyr139) Polyclonal Antibody

Catalog_no :	AP0549
Applications :	WB,IHC-p,IF,ELISA
Reactivity :	Human,Mouse
Category :	抗原抗体
Size :	100µg/50µg/20µg
Gene_name :	DAPP1
Protein_name :	Dual adapter for phosphotyrosine and 3-phosphotyrosine and 3-phosphoinositide
Humangene_id :	27071
Humanswissprot_no :	Q9UN19
Mousegene_id :	26377
Mouseswissprot_no :	Q9QXT1
Immunogen :	The antiserum was produced against synthesized peptide derived from human DAPP1 around the phosphorylation site of Tyr139. AA range:105-154
Specificity :	Phospho-BAM32 (Y139) Polyclonal Antibody detects endogenous levels of BAM32 protein only when phosphorylated at Y139.
Formulation :	Liquid in PBS containing 50% glycerol, 0.5% BSA and 0.02% sodium azide.
Source :	Rabbit
Dilution :	Western Blot: 1/500 - 1/2000. Immunohistochemistry: 1/100 - 1/300. Immunofluorescence: 1/200 - 1/1000. ELISA: 1/5000. Not yet tested in other applications.
Purification :	The antibody was affinity-purified from rabbit antiserum by affinity-chromatography using epitope-specific immunogen.
Concentration :	1 mg/ml
Storage_stability :	-20°C/1 year
Msds :	MSDS_Antibody.pdf
Other_name :	DAPP1; BAM32; HSPC066; Dual adapter for phosphotyrosine and 3-phosphotyrosine and 3-phosphoinositide; hDAPP1; B lymphocyte adapter protein Bam32; B-cell adapter

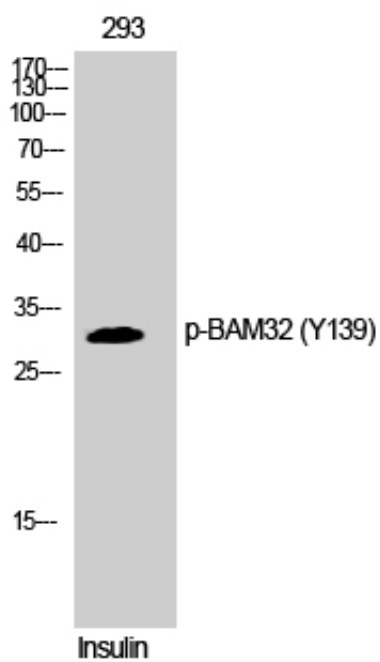


molecule of 32 kDa

Molecular
Weight :

32KD

Product Images



Western Blot analysis of 293 cells using Phospho-BAM32 (Y139) Polyclonal Antibody