

EphA2/3/4 (phospho Tyr588/596) Polyclonal Antibody

Catalog_no :	AP0550
Applications :	WB,IF,ELISA
Reactivity :	Human,Mouse,Rat
Category :	抗原抗体
Size :	100µg/50µg/20µg
Gene_name :	EPHA2/3/4
Protein_name :	Ephrin type-A receptor 2/3/4
Humangene_id :	1969/2042/2043
Humanswissprot_no :	P29317/P29320/P54764
Mousegene_id :	13836/13838
Ratgene_id :	29210
Ratswissprot_no :	O08680
Immunogen :	The antiserum was produced against synthesized peptide derived from human EPHA2/3 around the phosphorylation site of Tyr588/596. AA range:556-605
Specificity :	Phospho-EphA2/3/4 (Y588/596) Polyclonal Antibody detects endogenous levels of EphA2/3/4 protein only when phosphorylated at Y588/596.
Formulation :	Liquid in PBS containing 50% glycerol, 0.5% BSA and 0.02% sodium azide.
Source :	Rabbit
Dilution :	Western Blot: 1/500 - 1/2000. Immunofluorescence: 1/200 - 1/1000. ELISA: 1/20000. Not yet tested in other applications.
Purification :	The antibody was affinity-purified from rabbit antiserum by affinity-chromatography using epitope-specific immunogen.
Concentration :	1 mg/ml
Storage_stability :	-20°C/1 year
Msds :	MSDS_Antibody.pdf
Other_name :	EPHA2; ECK; Ephrin type-A receptor 2; Epithelial cell kinase; Tyrosine-protein kinase

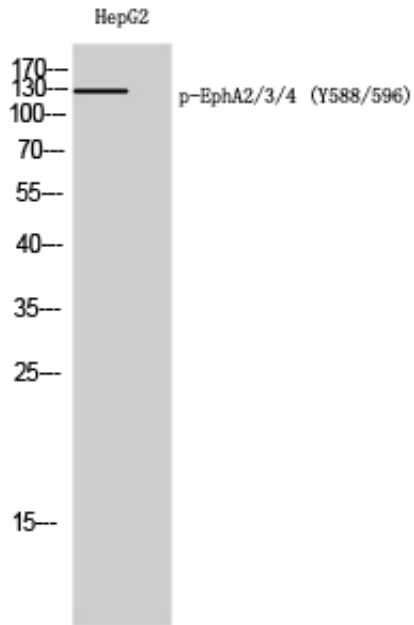


receptor ECK; EPHA3; ETK; ETK1; HEK; TYRO4; Ephrin type-A receptor 3; EPH-like kinase 4; EK4; hEK4; HEK; Human embryo kinase; Tyrosine-protein kinase TYRO

Molecular
Weight :

130KD

Product Images



Western Blot analysis of HepG2 cells using Phospho-EphA2/3/4 (Y588/596) Polyclonal Antibody