

## EpoR (phospho Tyr368) Polyclonal Antibody

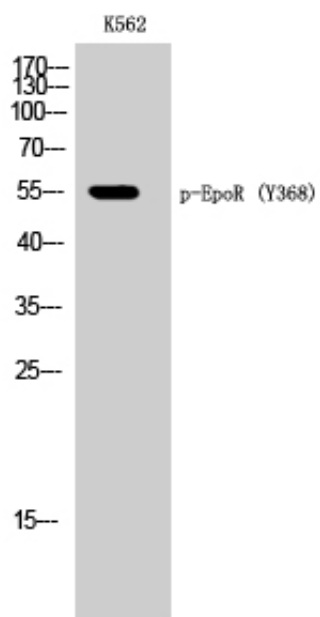
Catalog_no :	AP0552
Applications :	WB,IF,ELISA
Reactivity :	Human,Mouse,Rat
Category :	抗原抗体
Size :	100µg/50µg/20µg
Gene_name :	EPOR
Protein_name :	Erythropoietin receptor
Humangene_id :	<a href="#">2057</a>
Humanswissprot_no :	<a href="#">P19235</a>
Mousegene_id :	<a href="#">13857</a>
Mouseswissprot_no :	<a href="#">P14753</a>
Ratswissprot_no :	<a href="#">Q07303</a>
Immunogen :	The antiserum was produced against synthesized peptide derived from human Epo-R around the phosphorylation site of Tyr368. AA range:341-390
Specificity :	Phospho-EpoR (Y368) Polyclonal Antibody detects endogenous levels of EpoR protein only when phosphorylated at Y368.
Formulation :	Liquid in PBS containing 50% glycerol, 0.5% BSA and 0.02% sodium azide.
Source :	Rabbit
Dilution :	Western Blot: 1/500 - 1/2000. Immunofluorescence: 1/200 - 1/1000. ELISA: 1/10000. Not yet tested in other applications.
Purification :	The antibody was affinity-purified from rabbit antiserum by affinity-chromatography using epitope-specific immunogen.
Concentration :	1 mg/ml
Storage_stability :	-20°C/1 year
Msds :	<a href="#">MSDS_Antibody.pdf</a>



Other\_name : EPOR; Erythropoietin receptor; EPO-R

Molecular Weight : 55KD

## Product Images



Western Blot analysis of K562 cells using Phospho-EpoR (Y368) Polyclonal Antibody