

ER β (phospho Ser105) Polyclonal Antibody

Catalog_no :	AP0553
Applications :	WB,IF,ELISA
Reactivity :	Human,Mouse,Rat
Category :	抗原抗体
Size :	100 μ g/50 μ g/20 μ g
Gene_name :	ESR2
Protein_name :	Estrogen receptor beta
Humangene_id	2100
:	
Humanswissprot	Q92731
_no :	
Mousegene_id :	13983
Mouseswissprot	O08537
_no :	
Ratgene_id :	25149
Ratswissprot_no	Q62986
:	
Immunogen :	The antiserum was produced against synthesized peptide derived from human Estrogen Receptor-beta around the phosphorylation site of Ser105. AA range:71-120
Specificity :	Phospho-ER β (S105) Polyclonal Antibody detects endogenous levels of ER β protein only when phosphorylated at S105.
Formulation :	Liquid in PBS containing 50% glycerol, 0.5% BSA and 0.02% sodium azide.
Source :	Rabbit
Dilution :	Western Blot: 1/500 - 1/2000. Immunofluorescence: 1/200 - 1/1000. ELISA: 1/5000. Not yet tested in other applications.
Purification :	The antibody was affinity-purified from rabbit antiserum by affinity-chromatography using epitope-specific immunogen.
Concentration :	1 mg/ml
Storage_stability	-20°C/1 year
:	

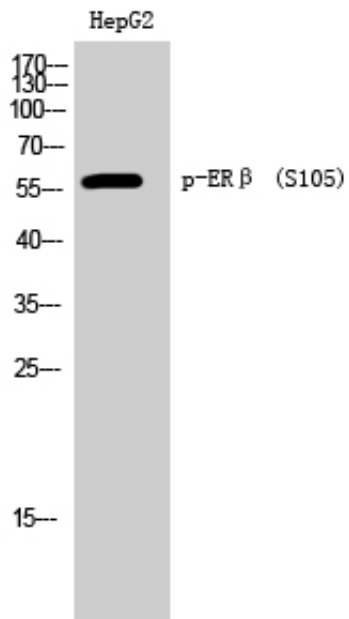


Msd : MSDS_Antibody.pdf

Other_name : ESR2; ESTRB; NR3A2; Estrogen receptor beta; ER-beta; Nuclear receptor subfamily 3 group A member 2

Molecular Weight : 59KD

Product Images



Western Blot analysis of HepG2 cells using Phospho-ER β (S105) Polyclonal Antibody