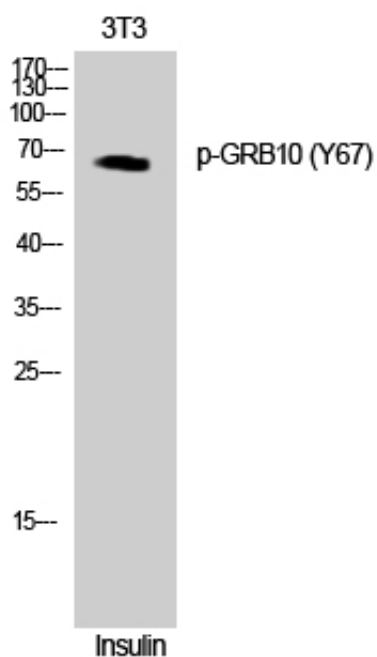


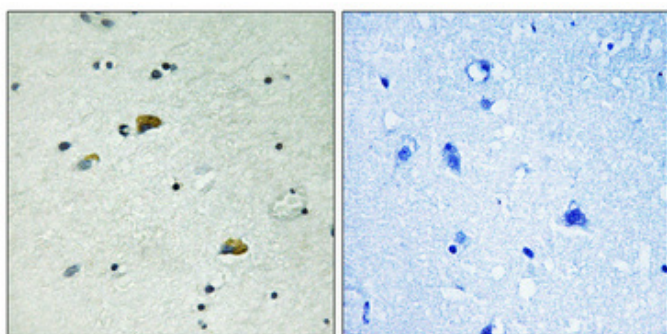
## GRB10 (phospho Tyr67) Polyclonal Antibody

|                     |  |
|---------------------|--|
| Catalog_no :        | AP0557   |
| Applications :      | WB,IHC-p,IF,ELISA  |
| Reactivity :        | Human  |
| Category :          | 抗原抗体   |
| Size :              | 100µg/50µg/20µg  |
| Gene_name :         | GRB10  |
| Protein_name :      | Growth factor receptor-bound protein 10  |
| Humangene_id :      | <a href="#">2887</a>   |
| Humanswissprot_no : | <a href="#">Q13322</a>   |
| Immunogen :         | The antiserum was produced against synthesized peptide derived from human GRB10 around the phosphorylation site of Tyr67. AA range:33-82                     |
| Specificity :       | Phospho-GRB10 (Y67) Polyclonal Antibody detects endogenous levels of GRB10 protein only when phosphorylated at Y67.  |
| Formulation :       | Liquid in PBS containing 50% glycerol, 0.5% BSA and 0.02% sodium azide.  |
| Source :            | Rabbit   |
| Dilution :          | Western Blot: 1/500 - 1/2000. Immunohistochemistry: 1/100 - 1/300. Immunofluorescence: 1/200 - 1/1000. ELISA: 1/20000. Not yet tested in other applications. |
| Purification :      | The antibody was affinity-purified from rabbit antiserum by affinity-chromatography using epitope-specific immunogen.  |
| Concentration :     | 1 mg/ml  |
| Storage_stability : | -20°C/1 year   |
| Msds :              | MSDS_Antibody.pdf  |
| Other_name :        | GRB10; GRBIR; KIAA0207; Growth factor receptor-bound protein 10; GRB10 adapter protein; Insulin receptor-binding protein Grb-IR                              |
| Molecular Weight :  | 67KD   |

## Product Images



Western Blot analysis of COLO cells using Phospho-GRB10 (Y67) Polyclonal Antibody



Immunohistochemical analysis of paraffin-embedded Human brain. Antibody was diluted at 1:100(4°,overnight). High-pressure and temperature Tris-EDTA,pH8.0 was used for antigen retrieval. Negative contrl (right) obtaned from antibody was pre-absorbed by immunogen peptide.