

IL-13R $\alpha$ 1 (phospho Tyr405) Polyclonal Antibody

Catalog_no :	AP0558
Applications :	WB,IF,ELISA
Reactivity :	Human,Mouse,Rat
Category :	抗原抗体
Size :	100 $\mu$ g/50 $\mu$ g/20 $\mu$ g
Gene_name :	IL13RA1
Protein_name :	Interleukin-13 receptor subunit alpha-1
Humangene_id :	<a href="#">3597</a>
Humanswissprot_no :	<a href="#">P78552</a>
Mousegene_id :	<a href="#">16164</a>
Mouseswissprot_no :	<a href="#">O09030</a>
Immunogen :	The antiserum was produced against synthesized peptide derived from human IL-13R alpha1 around the phosphorylation site of Tyr405. AA range:371-420
Specificity :	Phospho-IL-13R $\alpha$ 1 (Y405) Polyclonal Antibody detects endogenous levels of IL-13R $\alpha$ 1 protein only when phosphorylated at Y405.
Formulation :	Liquid in PBS containing 50% glycerol, 0.5% BSA and 0.02% sodium azide.
Source :	Rabbit
Dilution :	Western Blot: 1/500 - 1/2000. Immunofluorescence: 1/200 - 1/1000. ELISA: 1/10000. Not yet tested in other applications.
Purification :	The antibody was affinity-purified from rabbit antiserum by affinity-chromatography using epitope-specific immunogen.
Concentration :	1 mg/ml
Storage_stability :	-20°C/1 year
Msds :	MSDS_Antibody.pdf
Other_name :	IL13RA1; IL13R; IL13RA; Interleukin-13 receptor subunit alpha-1; IL-13 receptor subunit alpha-1; IL-13R subunit alpha-1; IL-13R-alpha-1; IL-13RA1; Cancer/testis antigen 19; CT19; CD antigen CD213a1

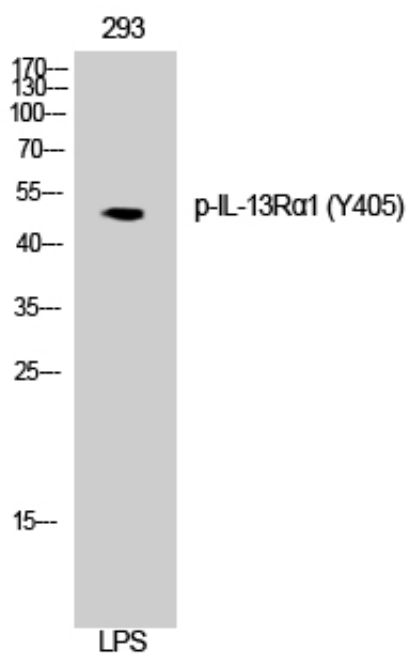


Molecular  
Weight :

49KD

---

## Product Images



Western Blot analysis of 3T3 cells using Phospho-IL-13R $\alpha$ 1 (Y405) Polyclonal Antibody