



AMPK α 1/2 (phospho Thr183/172) Polyclonal Antibody

Catalog_no :	<u>AP0575</u>
Applications :	<u>IF,WB,IHC-p,ELISA</u>
Reactivity :	<u>Human,Mouse,Rat,Monkey,Pig</u>
Category :	<u>抗原抗体</u>
Size :	<u>100μg/50μg/20μg</u>
Gene_name :	<u>AAPK1/AAPK2</u>
Protein_name :	<u>5'-AMP-activated protein kinase catalytic subunit alpha-1/2</u>
Humangene_id :	<u>5562/5563</u>
Humanswissprot_no :	<u>Q13131/P54646</u>
Mousegene_id :	<u>105787/108079</u>
Ratgene_id :	<u>65248/78975</u>
Ratswissprot_no :	<u>P54645/Q09137</u>
Immunogen :	<u>The antiserum was produced against synthesized peptide derived from human AMPK alpha around the phosphorylation site of Thr172. AA range:140-189</u>
Specificity :	<u>Phospho-AMPKα1/2 (T183/172) Polyclonal Antibody detects endogenous levels of AMPKα1/2 protein only when phosphorylated at T183/172.</u>
Formulation :	<u>Liquid in PBS containing 50% glycerol, 0.5% BSA and 0.02% sodium azide.</u>
Source :	<u>Rabbit</u>
Dilution :	<u>IF: 1:50-200 Western Blot: 1/500 - 1/2000. Immunohistochemistry: 1/100 - 1/300. ELISA: 1/40000. Not yet tested in other applications.</u>
Purification :	<u>The antibody was affinity-purified from rabbit antiserum by affinity-chromatography using epitope-specific immunogen.</u>
Concentration :	<u>1 mg/ml</u>
Storage_stability :	<u>-20°C/1 year</u>
Msds :	<u>MSDS_Antibody.pdf</u>
Other_name :	<u>PRKAA1; AMPK1; 5'-AMP-activated protein kinase catalytic subunit alpha-1; AMPK</u>

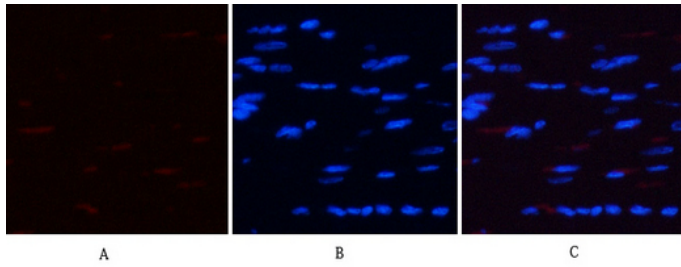


subunit alpha-1; Acetyl-CoA carboxylase kinase; ACACA kinase; Hydroxymethylglutaryl-CoA reductase kinase; HMGCR kinase; Tau-protein kinase PRKAA1; PRKAA2; AMPK;

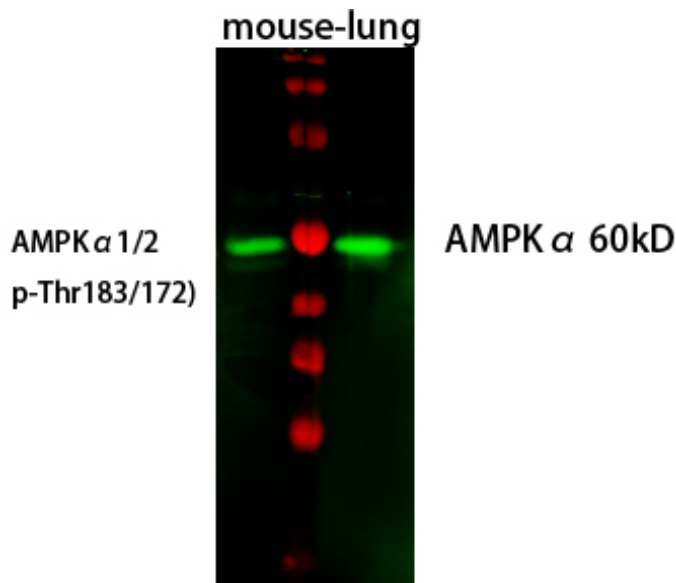
Molecular Weight :

63KD

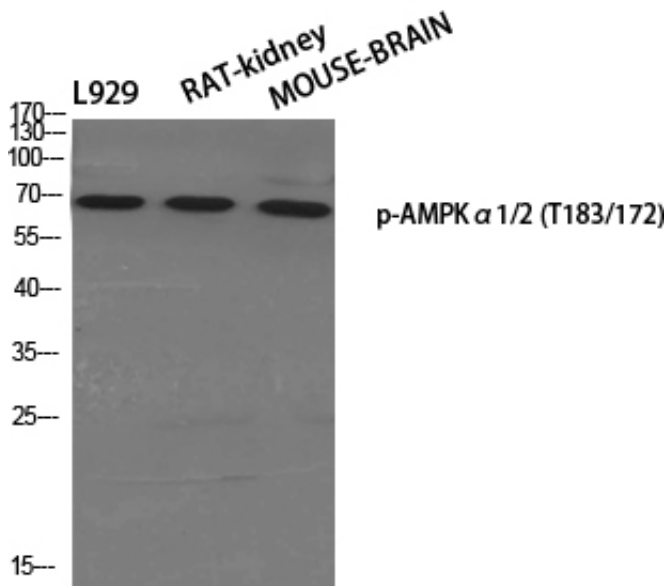
Product Images



Immunofluorescence analysis of rat-heart tissue.
1, AMPK α 1/2 (phospho Thr183/172) Polyclonal Antibody (red) was diluted at 1:200 (4°C, overnight). 2, Cy3 labeled Secondary antibody was diluted at 1:300 (room temperature, 50 min). 3, Picture B: DAPI (blue) 10 min.
Picture A: Target. Picture B: DAPI. Picture C: merge of A+B

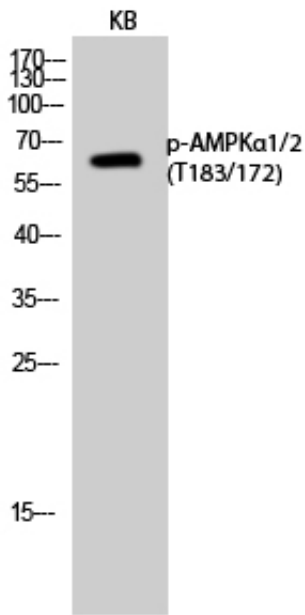


Western Blot analysis of mouse-lung cells using primary antibody diluted at 1:1000 (4°C overnight). Secondary antibody: Goat Anti-rabbit IgG IRDye 800 (diluted at 1:5000, 25°C, 1 hour). Cell lysate was extracted by Minute™ Plasma Membrane Protein Isolation and Cell Fractionation Kit (SM-005, Inventibiotec, MN, USA).

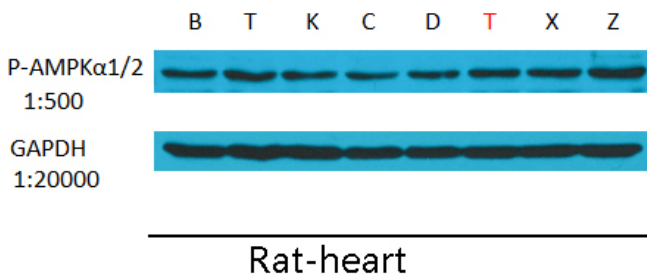


Western Blot analysis of various cells using Phospho-AMPK α 1/2 (T183/172) Polyclonal Antibody diluted at 1 : 500

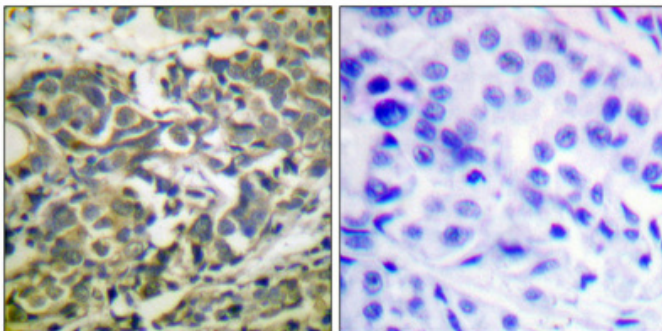
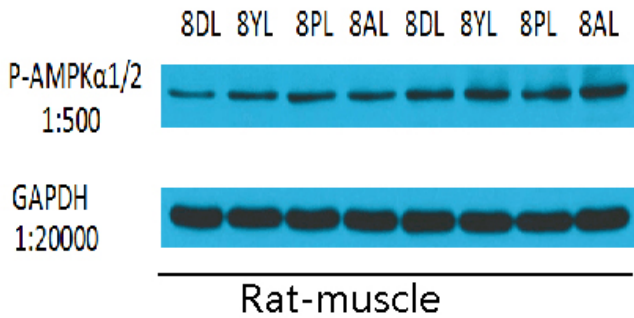
Western Blot analysis of KB cells using Phospho-AMPK α 1/2 (T183/172) Polyclonal Antibody diluted at 1 : 500



The picture was kindly provided by our customer

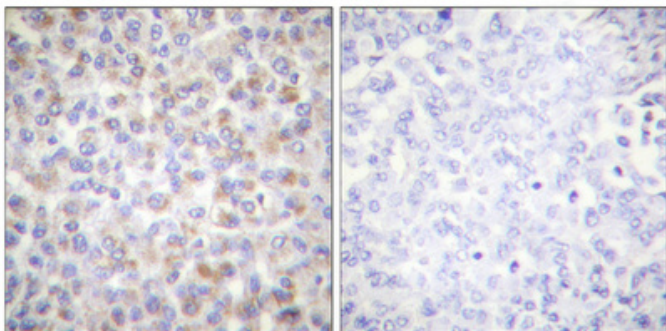


The picture was kindly provided by our customer



Immunohistochemical analysis of paraffin-embedded Human breast cancer. Antibody was diluted at 1:100(4°,overnight). High-pressure and temperature Tris-EDTA,pH8.0 was used for antigen retrieval. Negative contrl (right) obtaned from antibody was pre-absorbed by immunogen peptide.

Immunohistochemical analysis of paraffin-embedded Human breast cancer. Antibody was diluted at 1:100(4°,overnight). High-pressure and temperature Tris-



EDTA,pH8.0 was used for antigen retrieval. Negative contrl (right) obtaned from antibody was pre-absorbed by immunogen peptide.