

GABAA R $\beta$ 1 (phospho Ser434) Polyclonal Antibody

Catalog_no :	AP0576
Applications :	WB,IHC-p,ELISA
Reactivity :	Human,Mouse,Rat,Monkey
Category :	抗原抗体
Size :	100 $\mu$ g/50 $\mu$ g/20 $\mu$ g
Gene_name :	GABRB1
Protein_name :	Gamma-aminobutyric acid receptor subunit beta-1
Humangene_id :	<a href="#">2560</a>
Humanswissprot_no :	<a href="#">P18505</a>
Mousegene_id :	<a href="#">14400</a>
Mouseswissprot_no :	<a href="#">P50571</a>
Ratgene_id :	<a href="#">25450</a>
Ratswissprot_no :	<a href="#">P15431</a>
Immunogen :	The antiserum was produced against synthesized peptide derived from human GABA-RB around the phosphorylation site of Ser434. AA range:401-450
Specificity :	Phospho-GABAA R $\beta$ 1 (S434) Polyclonal Antibody detects endogenous levels of GABAA R $\beta$ 1 protein only when phosphorylated at S434.
Formulation :	Liquid in PBS containing 50% glycerol, 0.5% BSA and 0.02% sodium azide.
Source :	Rabbit
Dilution :	Western Blot: 1/500 - 1/2000. Immunohistochemistry: 1/100 - 1/300. ELISA: 1/40000. Not yet tested in other applications.
Purification :	The antibody was affinity-purified from rabbit antiserum by affinity-chromatography using epitope-specific immunogen.
Concentration :	1 mg/ml
Storage_stability :	-20°C/1 year

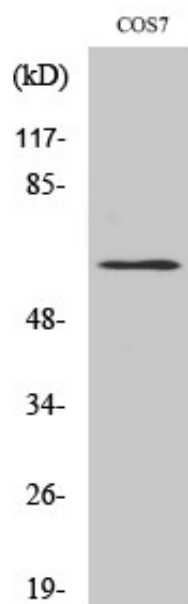


MsdS : MSDS\_Antibody.pdf

Other\_name : GABRB1; Gamma-aminobutyric acid receptor subunit beta-1; GABA(A) receptor subunit beta-1

Molecular Weight : 55KD

## Product Images



Western Blot analysis of various cells using Phospho-GABAA R $\beta$ 1 (S434) Polyclonal Antibody