

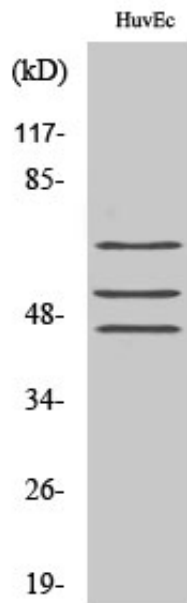
Shc (phospho Tyr349) Polyclonal Antibody

Catalog_no :	AP0578
Applications :	WB,IHC-p,ELISA
Reactivity :	Human,Mouse,Rat
Category :	抗原抗体
Size :	100µg/50µg/20µg
Gene_name :	SHC1
Protein_name :	SHC-transforming protein 1
Humangene_id :	6464
Humanswissprot_no :	P29353
Mousegene_id :	20416
Mouseswissprot_no :	P98083
Ratgene_id :	85385
Ratswissprot_no :	Q5M824
Immunogen :	The antiserum was produced against synthesized peptide derived from human Shc around the phosphorylation site of Tyr349. AA range:315-364
Specificity :	Phospho-Shc (Y349) Polyclonal Antibody detects endogenous levels of Shc protein only when phosphorylated at Y349.
Formulation :	Liquid in PBS containing 50% glycerol, 0.5% BSA and 0.02% sodium azide.
Source :	Rabbit
Dilution :	Western Blot: 1/500 - 1/2000. Immunohistochemistry: 1/100 - 1/300. ELISA: 1/10000. Not yet tested in other applications.
Purification :	The antibody was affinity-purified from rabbit antiserum by affinity-chromatography using epitope-specific immunogen.
Concentration :	1 mg/ml
Storage_stability :	-20°C/1 year

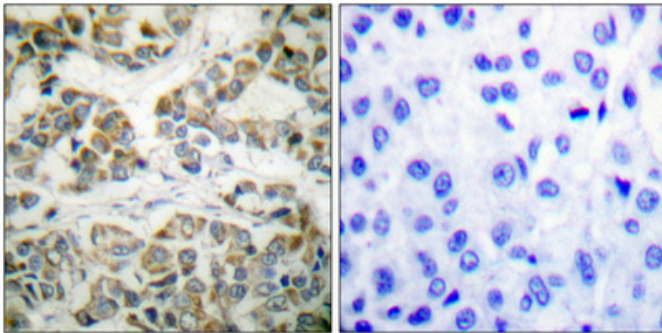


MsdS :	MSDS_Antibody.pdf
Other_name :	SHC1; SHC; SHCA; SHC-transforming protein 1; SHC-transforming protein 3; SHC-transforming protein A; Src homology 2 domain-containing-transforming protein C1; SH2 domain protein C1
Molecular Weight :	66(p66 isoform), 52(p52 isoform), 46(p46 isoform)

Product Images



Western Blot analysis of various cells using Phospho-Shc (Y349) Polyclonal Antibody diluted at 1 : 1000



Immunohistochemical analysis of paraffin-embedded Human breast cancer. Antibody was diluted at 1:100(4°,overnight). High-pressure and temperature Tris-EDTA,pH8.0 was used for antigen retrieval. Negative contrl (right) obtaned from antibody was pre-absorbed by immunogen peptide.