

SH-PTP2 (phospho Tyr542) Polyclonal Antibody

Catalog_no :	AP0581
Applications :	WB,IHC-p,ELISA
Reactivity :	Human,Mouse,Rat
Category :	抗原抗体
Size :	100µg/50µg/20µg
Gene_name :	PTPN11
Protein_name :	Tyrosine-protein phosphatase non-receptor type 11
Humangene_id :	5781
Humanswissprot_no :	Q06124
Mousegene_id :	19247
Mouseswissprot_no :	P35235
Ratgene_id :	25622
Ratswissprot_no :	P41499
Immunogen :	The antiserum was produced against synthesized peptide derived from human SHP-2 around the phosphorylation site of Tyr542. AA range:508-557
Specificity :	Phospho-SH-PTP2 (Y542) Polyclonal Antibody detects endogenous levels of SH-PTP2 protein only when phosphorylated at Y542.
Formulation :	Liquid in PBS containing 50% glycerol, 0.5% BSA and 0.02% sodium azide.
Source :	Rabbit
Dilution :	Western Blot: 1/500 - 1/2000. Immunohistochemistry: 1/100 - 1/300. ELISA: 1/40000. Not yet tested in other applications.
Purification :	The antibody was affinity-purified from rabbit antiserum by affinity-chromatography using epitope-specific immunogen.
Concentration :	1 mg/ml
Storage_stability :	-20°C/1 year

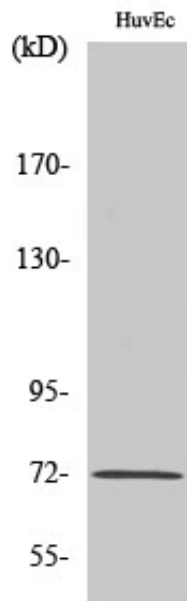


MsdS : [MSDS_Antibody.pdf](#)

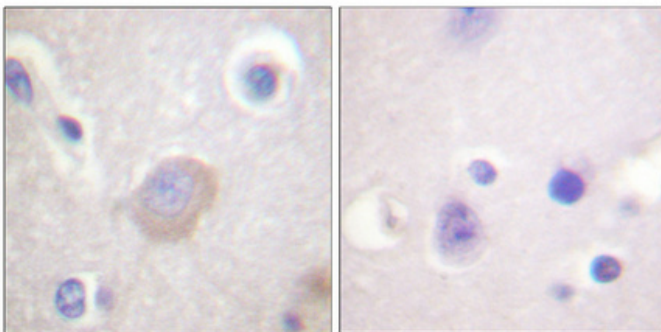
Other_name : PTPN11; PTP2C; SHPTP2; Tyrosine-protein phosphatase non-receptor type 11; Protein-tyrosine phosphatase 1D; PTP-1D; Protein-tyrosine phosphatase 2C; PTP-2C; SH-PTP2; SHP-2; Shp2; SH-PTP3

Molecular Weight : 70KD

Product Images



Western Blot analysis of various cells using Phospho-SH-PTP2 (Y542) Polyclonal Antibody diluted at 1 : 1000



Immunohistochemical analysis of paraffin-embedded Human brain. Antibody was diluted at 1:100(4°,overnight). High-pressure and temperature Tris-EDTA,pH8.0 was used for antigen retrieval. Negative contrl (right) obtaned from antibody was pre-absorbed by immunogen peptide.