

Smad1 (phospho Ser465) Polyclonal Antibody

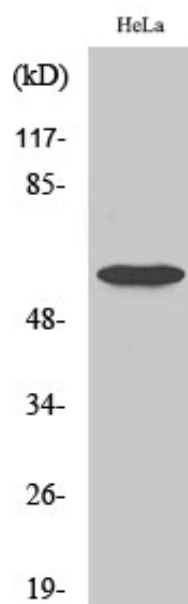
| | |
|-------------------|---|
| Catalog_no : | AP0583 |
| Applications : | WB,IHC-p,ELISA |
| Reactivity : | Human,Mouse,Rat |
| Category : | 抗原抗体 |
| Size : | 100µg/50µg/20µg |
| Gene_name : | SMAD1 |
| Protein_name : | Mothers against decapentaplegic homolog 1 |
| Humangene_id | 4086 |
| : | |
| Humanswissprot | Q15797 |
| _no : | |
| Mousegene_id : | 17125 |
| Mouseswissprot | P70340 |
| _no : | |
| Ratswissprot_no | P97588 |
| : | |
| Immunogen : | The antiserum was produced against synthesized peptide derived from human Smad1 around the phosphorylation site of Ser465. AA range:416-465 |
| Specificity : | Phospho-Smad1 (S465) Polyclonal Antibody detects endogenous levels of Smad1 protein only when phosphorylated at S465. |
| Formulation : | Liquid in PBS containing 50% glycerol, 0.5% BSA and 0.02% sodium azide. |
| Source : | Rabbit |
| Dilution : | Western Blot: 1/500 - 1/2000. Immunohistochemistry: 1/100 - 1/300. ELISA: 1/20000. Not yet tested in other applications. |
| Purification : | The antibody was affinity-purified from rabbit antiserum by affinity-chromatography using epitope-specific immunogen. |
| Concentration : | 1 mg/ml |
| Storage_stability | -20°C/1 year |
| : | |
| Msds : | MSDS_Antibody.pdf |



Other_name : SMAD1; BSP1; MADH1; MADR1; Mothers against decapentaplegic homolog 1; MAD homolog 1; Mothers against DPP homolog 1; JV4-1; Mad-related protein 1; SMAD family member 1; SMAD 1; Smad1; hSMAD1; Transforming growth factor-beta-signaling protein

Molecular Weight : 60KD

Product Images



Western Blot analysis of various cells using Phospho-Smad1 (S465) Polyclonal Antibody