



## Synaptotagmin 1/2 (phospho Ser309/306) Polyclonal Antibody

Catalog_no :	AP0586
Applications :	WB,IHC-p,ELISA
Reactivity :	Human,Mouse,Rat
Category :	抗原抗体
Size :	100µg/50µg/20µg
Gene_name :	SYT1/SYT2
Protein_name :	Synaptotagmin-1/2
Humangene_id :	<a href="#">6857/127833</a>
Humanswissprot_no :	<a href="#">P21579/Q8N9I0</a>
Mousegene_id :	<a href="#">20979/20980</a>
Ratgene_id :	<a href="#">25716/24805</a>
Ratswissprot_no :	<a href="#">P21707/P29101</a>
Immunogen :	The antiserum was produced against synthesized peptide derived from human Synaptotagmin around the phosphorylation site of Ser309. AA range:276-325
Specificity :	Phospho-Synaptotagmin 1/2 (S309/306) Polyclonal Antibody detects endogenous levels of Synaptotagmin 1/2 protein only when phosphorylated at S309/306.
Formulation :	Liquid in PBS containing 50% glycerol, 0.5% BSA and 0.02% sodium azide.
Source :	Rabbit
Dilution :	Western Blot: 1/500 - 1/2000. Immunohistochemistry: 1/100 - 1/300. ELISA: 1/10000. Not yet tested in other applications.
Purification :	The antibody was affinity-purified from rabbit antiserum by affinity-chromatography using epitope-specific immunogen.
Concentration :	1 mg/ml
Storage_stability :	-20°C/1 year
Msds :	MSDS_Antibody.pdf
Other_name :	SYT1; SVP65; SYT; Synaptotagmin-1; Synaptotagmin I; SytI; p65; SYT2; Synaptotagmin-2;



Synaptotagmin II; SytII

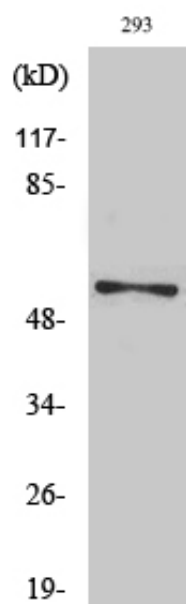
---

Molecular  
Weight :

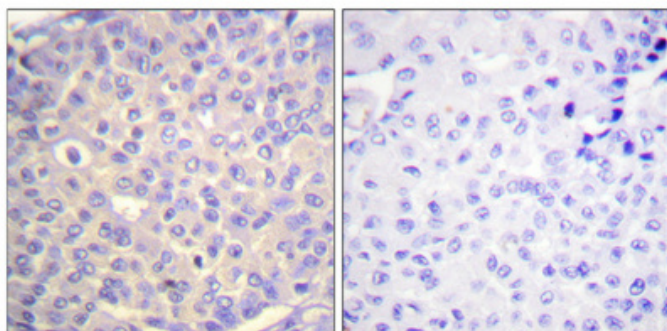
47KD

---

## Product Images



Western Blot analysis of various cells using Phospho-Synaptotagmin 1/2 (S309/306) Polyclonal Antibody



Immunohistochemical analysis of paraffin-embedded Human breast cancer. Antibody was diluted at 1:100(4°, overnight). High-pressure and temperature Tris-EDTA, pH8.0 was used for antigen retrieval. Negative control (right) obtained from antibody was pre-absorbed by immunogen peptide.