



Synaptotagmin 1/2 (phospho Thr202/199) Polyclonal Antibody

Catalog_no :	<u>AP0587</u>
Applications :	<u>WB,IHC-p,ELISA</u>
Reactivity :	<u>Human,Mouse,Rat</u>
Category :	<u>抗原抗体</u>
Size :	<u>100µg/50µg/20µg</u>
Gene_name :	<u>SYT1/SYT2</u>
Protein_name :	<u>Synaptotagmin-1/2</u>
Humangene_id :	<u>6857/127833</u>
Humanswissprot_no :	<u>P21579/Q8N9I0</u>
Mousegene_id :	<u>20979/20980</u>
Ratgene_id :	<u>25716/24805</u>
Ratswissprot_no :	<u>P21707/P29101</u>
Immunogen :	<u>The antiserum was produced against synthesized peptide derived from human Synaptotagmin around the phosphorylation site of Thr202. AA range:176-225</u>
Specificity :	<u>Phospho-Synaptotagmin 1/2 (T202/199) Polyclonal Antibody detects endogenous levels of Synaptotagmin 1/2 protein only when phosphorylated at T202/199.</u>
Formulation :	<u>Liquid in PBS containing 50% glycerol, 0.5% BSA and 0.02% sodium azide.</u>
Source :	<u>Rabbit</u>
Dilution :	<u>Western Blot: 1/500 - 1/2000. Immunohistochemistry: 1/100 - 1/300. ELISA: 1/40000. Not yet tested in other applications.</u>
Purification :	<u>The antibody was affinity-purified from rabbit antiserum by affinity-chromatography using epitope-specific immunogen.</u>
Concentration :	<u>1 mg/ml</u>
Storage_stability :	<u>-20°C/1 year</u>
Msds :	<u>MSDS_Antibody.pdf</u>
Other_name :	<u>SYT1; SVP65; SYT; Synaptotagmin-1; Synaptotagmin I; SytI; p65; SYT2; Synaptotagmin-2;</u>

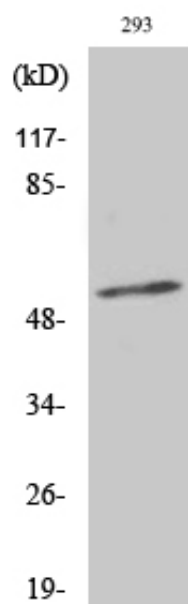


Synaptotagmin II; SytII

Molecular
Weight :

60KD

Product Images



Western Blot analysis of various cells using Phospho-Synaptotagmin 1/2 (T202/199) Polyclonal Antibody