

TH (phospho Ser71) Polyclonal Antibody

Catalog_no :	AP0589
Applications :	WB,IHC-p,ELISA
Reactivity :	Human,Mouse,Rat
Category :	抗原抗体
Size :	100µg/50µg/20µg
Gene_name :	TH
Protein_name :	Tyrosine 3-monooxygenase
Humangene_id :	7054
Humanswissprot_no :	P07101
Mousegene_id :	21823
Mouseswissprot_no :	P24529
Ratgene_id :	25085
Ratswissprot_no :	P04177
Immunogen :	The antiserum was produced against synthesized peptide derived from human Tyrosine Hydroxylase around the phosphorylation site of Ser40. AA range:41-90
Specificity :	Phospho-TH (S71) Polyclonal Antibody detects endogenous levels of TH protein only when phosphorylated at S71.
Formulation :	Liquid in PBS containing 50% glycerol, 0.5% BSA and 0.02% sodium azide.
Source :	Rabbit
Dilution :	Western Blot: 1/500 - 1/2000. Immunohistochemistry: 1/100 - 1/300. ELISA: 1/40000. Not yet tested in other applications.
Purification :	The antibody was affinity-purified from rabbit antiserum by affinity-chromatography using epitope-specific immunogen.
Concentration :	1 mg/ml
Storage_stability :	-20°C/1 year

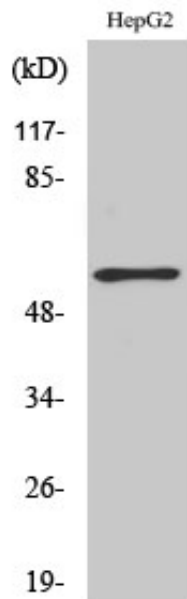


Msd : MSDS_Antibody.pdf

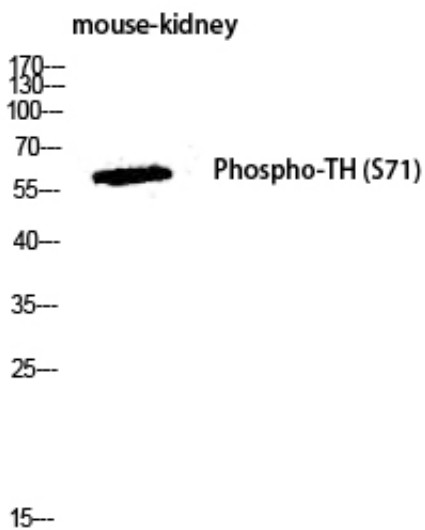
Other_name : TH; TYH; Tyrosine 3-monooxygenase; Tyrosine 3-hydroxylase; TH

Molecular Weight : 55KD

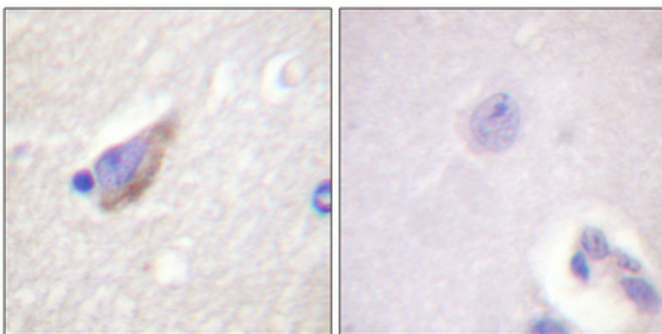
Product Images



Western Blot analysis of various cells using Phospho-TH (S71) Polyclonal Antibody diluted at 1 : 1000



Western blot analysis of mouse-kidney lysis using Phospho-TH (S71) antibody. Antibody was diluted at 1:1000



Immunohistochemical analysis of paraffin-embedded Human brain. Antibody was diluted at 1:100(4°,overnight). High-pressure and temperature Tris-EDTA,pH8.0 was used for antigen retrieval. Negative contrl (right) obtaned from antibody was pre-absorbed by immunogen peptide.