

## LIMK-1/2 (phospho Thr508/505) Polyclonal Antibody

Catalog_no :	<u>AP0591</u>
Applications :	<u>WB,IHC-p,ELISA</u>
Reactivity :	<u>Human,Mouse,Rat</u>
Category :	<u>抗原抗体</u>
Size :	<u>100µg/50µg/20µg</u>
Gene_name :	<u>LIMK1/LIMK2</u>
Protein_name :	<u>LIM domain kinase 1/LIM domain kinase 2</u>
Humangene_id :	<u><a href="#">3984/3985</a></u>
Humanswissprot_no :	<u><a href="#">P53667/P53671</a></u>
Mousegene_id :	<u><a href="#">16885/16886</a></u>
Ratgene_id :	<u><a href="#">29524</a></u>
Ratswissprot_no :	<u><a href="#">P53669/P53670</a></u>
Immunogen :	<u>Synthesized phospho-peptide around the phosphorylation site of human LIMK-1/2 (phospho Thr508/505)</u>
Specificity :	<u>Phospho-LIMK-1/2 (T508/505) Polyclonal Antibody detects endogenous levels of LIMK-1/2 protein only when phosphorylated at T508/505.</u>
Formulation :	<u>Liquid in PBS containing 50% glycerol, 0.5% BSA and 0.02% sodium azide.</u>
Source :	<u>Rabbit</u>
Dilution :	<u>Western Blot: 1/500 - 1/2000. Immunohistochemistry: 1/100 - 1/300. ELISA: 1/10000. Not yet tested in other applications.</u>
Purification :	<u>The antibody was affinity-purified from rabbit antiserum by affinity-chromatography using epitope-specific immunogen.</u>
Concentration :	<u>1 mg/ml</u>
Storage_stability :	<u>-20°C/1 year</u>
Msds :	<u><a href="#">MSDS_Antibody.pdf</a></u>
Other_name :	<u>LIMK1; LIMK; LIM domain kinase 1; LIMK-1; LIMK2; LIM domain kinase 2; LIMK-2</u>

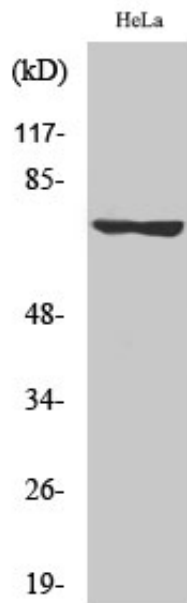


Molecular  
Weight :

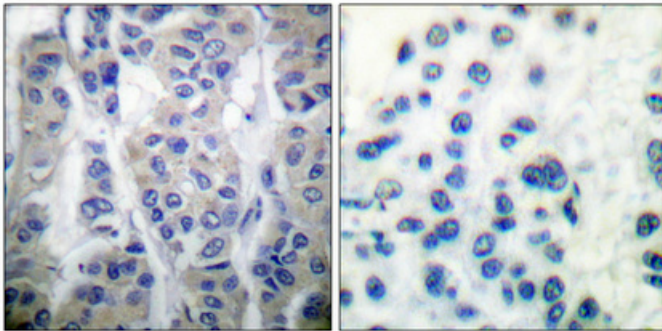
72KD

---

## Product Images



Western Blot analysis of various cells using Phospho-LIMK-1/2 (T508/505) Polyclonal Antibody



Immunohistochemical analysis of paraffin-embedded Human breast cancer. Antibody was diluted at 1:100(4°, overnight). High-pressure and temperature Tris-EDTA, pH8.0 was used for antigen retrieval. Negative control (right) obtained from antibody was pre-absorbed by immunogen peptide.